

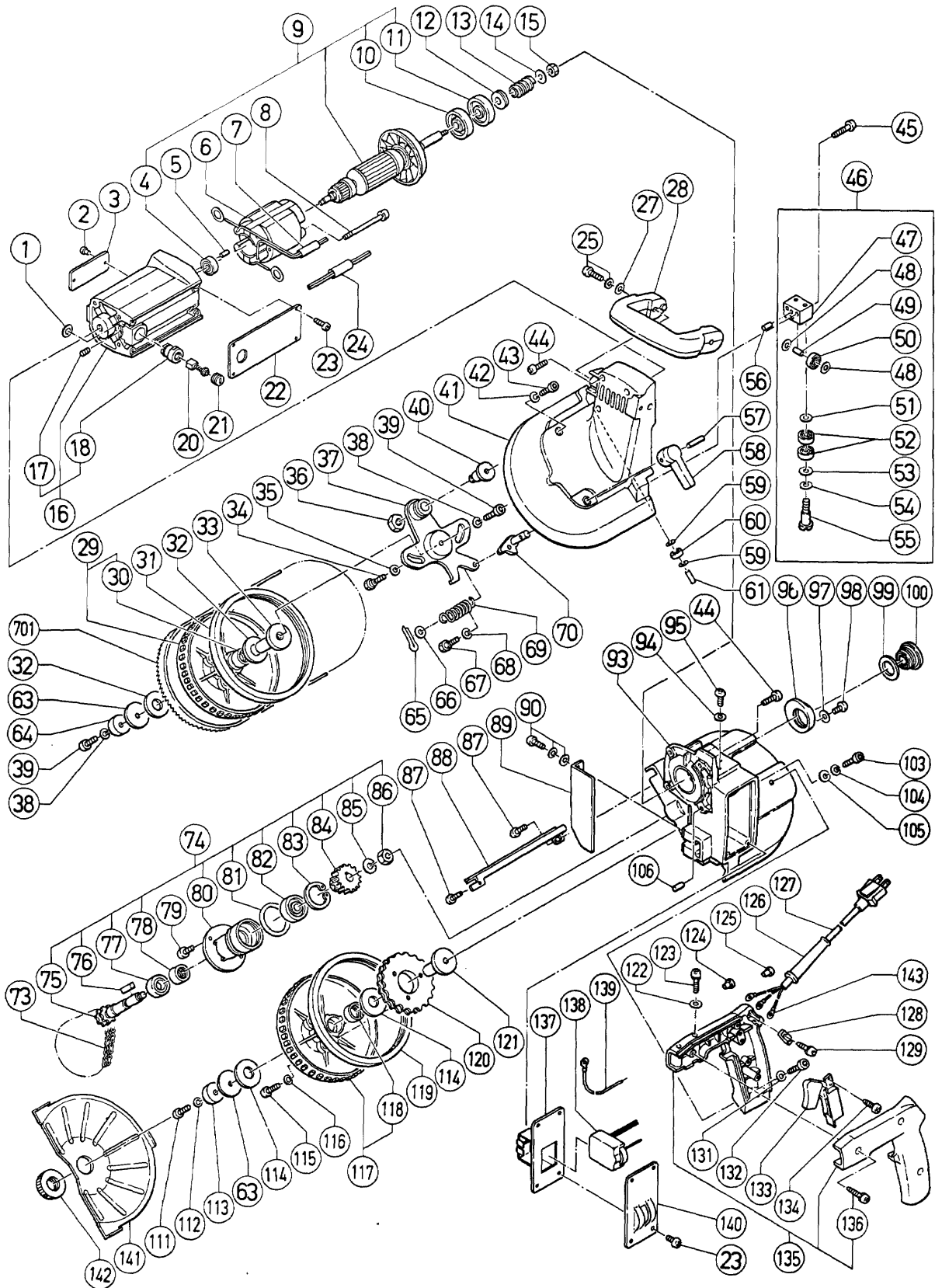
## ELECTRIC TOOL PARTS LIST

■ ROTARY BAND SAW

1990·2·20

Model CB 10VA

CB 10VA(E1)



## PARTS

CB 10VA

ITEM NO.	CODE NO.	DESCRIPTION	NO. USED	REMARKS
55	977-139	BEARING PIN (B)	4	
56	949-891	PIN D4X10 (10 PCS.)	2	
57	949-499	ROLL PIN D4X20 (10 PCS.)	1	
58	977-119	TENSION LEVER	1	
59	949-429	BOLT WASHER M4 (10 PCS.)	2	
60	604-ZZM	BALL BEARING 604ZZMC3PS2S	1	
61	949-499	ROLL PIN D4X20 (10 PCS.)	1	
63	936-311	WASHER (B)	2	
64	977-109	WASHER (A)	1	
65	949-531	SPLIT PIN D2X12 (10 PCS.)	1	
66	949-426	WASHER M8 (10 PCS.)	2	
67	977-117	COVER SCREW (A)	1	
68	949-455	SPRING WASHER M6 (10 PCS.)	1	
69	977-120	TENSION SPRING	1	
70	977-118	CAM SHAFT (A)	1	
73	977-112	CHAIN	1	
74	977-096	SPROCKET ASS'Y	1	INCLUD.75-78,80-86
75	977-097	SPROCKET SHAFT	1	
76	931-008	FEATHER KEY 4X4X12	1	
77	977-102	OIL SEAL	1	
78	977-101	NEEDLE BEARING	1	
79	949-239	MACHINE SCREW M5X16 (10 PCS.)	2	
80	977-103	SHAFT HOLDER	1	
81	977-100	O-RING (P-38)	1	
82	620-1VV	BALL BEARING 6201VVCMP2S	1	
83	948-001	RETAINING RING FOR D32 HOLE	1	
84	977-098	WORM WHEEL	1	
85	949-458	SPRING WASHER M10 (10 PCS.)	1	
86	977-099	ADJUSTING NUT (B)	1	
87	949-236	MACHINE SCREW M5X10 (10 PCS.)	2	
88	303-190	SAW COVER (C)	1	
89	977-125	GUIDE PLATE	1	
90	996-728	HEX. SOCKET HD. BOLT (W/WASHERS) M5X16	2	
93	303-187	SAW COVER (A)	1	
94	949-453	SPRING WASHER M4 (10 PCS.)	1	
95	949-215	MACHINE SCREW M4X8 (10 PCS.)	1	
96	977-142	SEAL CAP	1	
97	972-207	WASHER	1	
98	949-215	MACHINE SCREW M4X8 (10 PCS.)	1	
99	977-132	SEAL WASHER	1	
100	302-164	OIL GAUGE	1	
103	949-660	HEX. SOCKET HD. BOLT M6X20 (10 PCS.)	1	
104	949-455	SPRING WASHER M6 (10 PCS.)	1	
105	967-329	WASHER (H)	1	
106	949-891	PIN D4X10 (10 PCS.)	2	
111	949-660	HEX. SOCKET HD. BOLT M6X20 (10 PCS.)	1	
112	949-455	SPRING WASHER M6 (10 PCS.)	1	
113	977-135	WASHER (B)	1	
114	977-108	PLASTIC WASHER	2	
115	949-661	HEX. SOCKET HD. BOLT M6X30 (10 PCS.)	3	
116	949-455	SPRING WASHER M6 (10 PCS.)	3	
117	977-106	SAW WHEEL ASS'Y	1	INCLUD.118

## PARTS

CB 10VA

ITEM NO.	CODE NO.	DESCRIPTION	NO. USED	REMARKS
55	977-139	BEARING PIN (B)	4	
56	949-891	PIN D4X10 (10 PCS.)	2	
57	949-499	ROLL PIN D4X20 (10 PCS.)	1	
58	977-119	TENSION LEVER	1	
59	949-429	BOLT WASHER M4 (10 PCS.)	2	
60	604-ZZM	BALL BEARING 604ZZMC3PS2S	1	
61	949-499	ROLL PIN D4X20 (10 PCS.)	1	
63	936-311	WASHER (B)	2	
64	977-109	WASHER (A)	1	
65	949-531	SPLIT PIN D2X12 (10 PCS.)	1	
66	949-426	WASHER M8 (10 PCS.)	2	
67	977-117	COVER SCREW (A)	1	
68	949-455	SPRING WASHER M6 (10 PCS.)	1	
69	977-120	TENSION SPRING	1	
70	977-118	CAM SHAFT (A)	1	
73	977-112	CHAIN	1	
74	977-096	SPROCKET ASS'Y	1	INCLUD.75-78,80-86
75	977-097	SPROCKET SHAFT	1	
76	931-008	FEATHER KEY 4X4X12	1	
77	977-102	OIL SEAL	1	
78	977-101	NEEDLE BEARING	1	
79	949-239	MACHINE SCREW M5X16 (10 PCS.)	2	
80	977-103	SHAFT HOLDER	1	
81	977-100	O-RING (P-38)	1	
82	620-1VV	BALL BEARING 6201VVCMP2S	1	
83	948-001	RETAINING RING FOR D32 HOLE	1	
84	977-098	WORM WHEEL	1	
85	949-458	SPRING WASHER M10 (10 PCS.)	1	
86	977-099	ADJUSTING NUT (B)	1	
87	949-236	MACHINE SCREW M5X10 (10 PCS.)	2	
88	303-190	SAW COVER (C)	1	
89	977-125	GUIDE PLATE	1	
90	996-728	HEX. SOCKET HD. BOLT (W/WASHERS) M5X16	2	
93	303-187	SAW COVER (A)	1	
94	949-453	SPRING WASHER M4 (10 PCS.)	1	
95	949-215	MACHINE SCREW M4X8 (10 PCS.)	1	
96	977-142	SEAL CAP	1	
97	972-207	WASHER	1	
98	949-215	MACHINE SCREW M4X8 (10 PCS.)	1	
99	977-132	SEAL WASHER	1	
100	302-164	OIL GAUGE	1	
103	949-660	HEX. SOCKET HD. BOLT M6X20 (10 PCS.)	1	
104	949-455	SPRING WASHER M6 (10 PCS.)	1	
105	967-329	WASHER (H)	1	
106	949-891	PIN D4X10 (10 PCS.)	2	
111	949-660	HEX. SOCKET HD. BOLT M6X20 (10 PCS.)	1	
112	949-455	SPRING WASHER M6 (10 PCS.)	1	
113	977-135	WASHER (B)	1	
114	977-108	PLASTIC WASHER	2	
115	949-661	HEX. SOCKET HD. BOLT M6X30 (10 PCS.)	3	
116	949-455	SPRING WASHER M6 (10 PCS.)	3	
117	977-106	SAW WHEEL ASS'Y	1	INCLUD.118

