

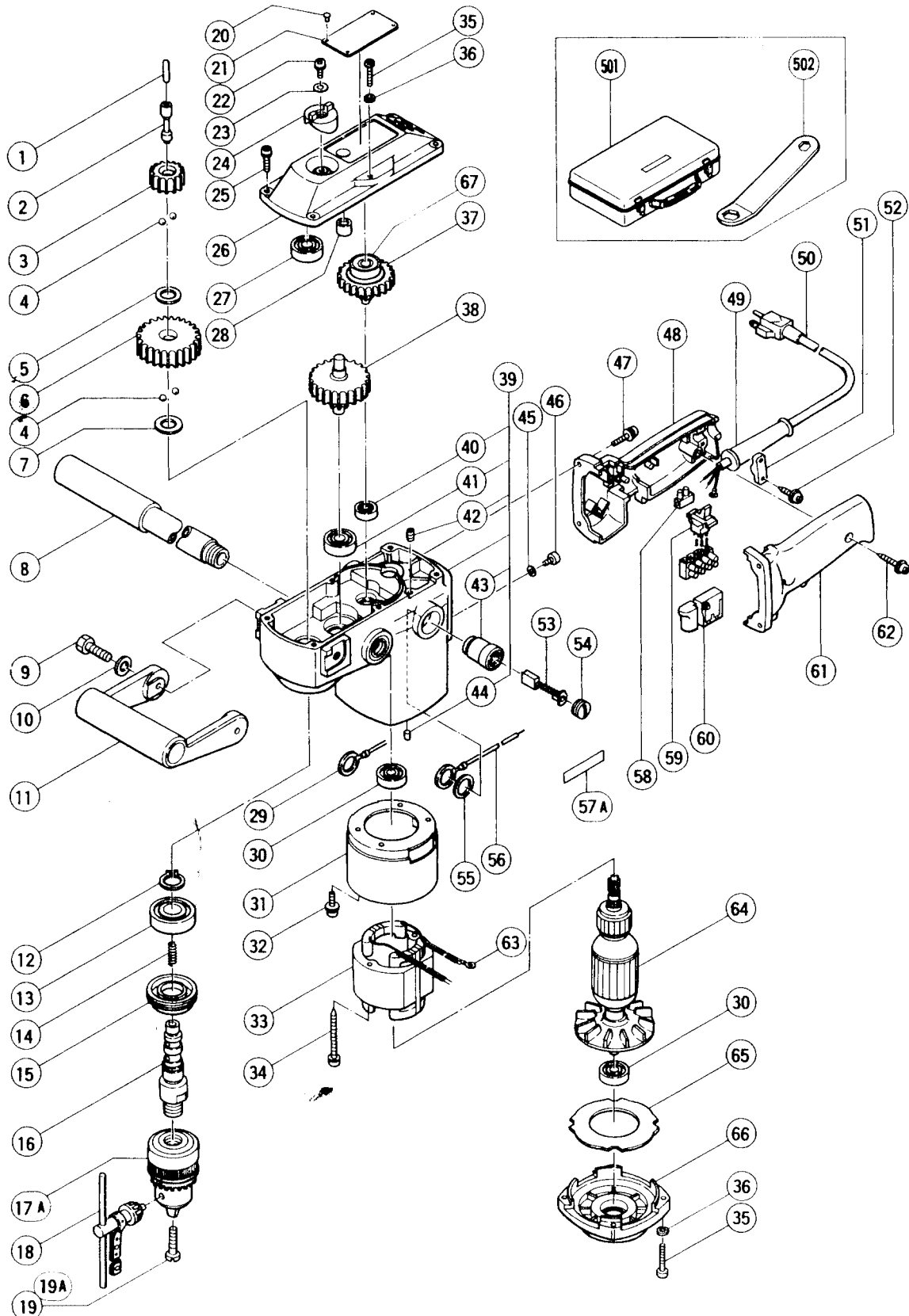
ELECTRIC TOOL PARTS LIST

■ ANGLE DRILL

1990-1-10

Model D13YA

D 13YA(E2)



PARTS

D 13YA

ITEM NO.	CODE NO.	DESCRIPTION	NO. USED	REMARKS
1	991-496	PIN (A) D5	1	
2	991-495	SLIDE BAR	1	
3	991-493	FINAL GEAR (A)	1	
4	959-154	STEEL BALL D5.556 (10 PCS.)	4	
5	950-513	WASHER	1	
6	991-494	FINAL GEAR (B)	1	
7	983-719	WASHER (A)	1	
8	991-504	BAR HANDLE	1	
9	949-624	BOLT M8X20 (10 PCS.)	2	
10	949-426	WASHER M8 (10 PCS.)	2	
11	991-503	SIDE HANDLE	1	
12	967-261	RETAINING RING FOR D17 SHAFT	1	
13	620-3VV	BALL BEARING 6203VVCMP2S	1	
14	874-030	STOPPER SPRING	1	
15	991-492	BEARING CAP	1	
16	991-491	SPINDLE	1	
17A	950-287	DRILL CHUCK 13WLR	1	INCLUD 18,19A
18	930-515	CHUCK WRENCH 10G	1	
19	991-505	SPECIAL SCREW M8	1	TILL 1.1987
19A	991-514	SPECIAL SCREW M8X22	1	SINCE 2.1987
20	949-510	RIVET D2.5X4.8 (10 PCS.)	4	
21		NAME PLATE	1	
22	992-038	SEAL LOCK SCREW (W/SP.WASHER) M5X10	1	
23	991-502	HOLDER WASHER	1	
24	991-501	CHANGE RING	1	
25	987-512	MACHINE SCREW (W/SP.WASHER) M5X16	4	
26	991-499	UPPER COVER ASS'Y	1	INCLUD.27,28
27	600-1VV	BALL BEARING 6001VVCMP2L	1	
28	991-506	NEEDLE BEARING (NTN BK1010)	1	
29	991-509	BRUSH TERMINAL	1	
30	600-0VV	BALL BEARING 6000VVCMP2S	2	
31	991-508	STATOR INSULATOR	1	
32	986-662	MACHINE SCREW (W/WASHERS) M4X10	4	
33	340-012C	STATOR ASS'Y 115V	1	INCLUD.63
34	986-510	TAPPING SCREW (W/SP.WASHER) D5X55	2	
35	949-243	MACHINE SCREW M5X25 (10 PCS.)	6	
36	949-454	SPRING WASHER M5 (10 PCS.)	6	
37	991-512	SECOND PINION	1	
38	991-497	THIRD PINION	1	
39	991-490	HOUSING ASS'Y	1	INCLUD.40-44
40	626-VVM	BALL BEARING 626VVMC2ERPS2S	1	
41	620-0VV	BALL BEARING 6200VVCMP2S	1	
42	932-668	HEX. SOCKET SET SCREW M4X10	2	
43	944-598	BRUSH HOLDER	2	
44	946-362	BEARING LOCK	1	
45	949-453	SPRING WASHER M4 (10 PCS.)	1	
46	949-292	MACHINE SCREW (BRASS) M4X6 (10 PCS.)	1	
47	986-274	MACHINE SCREW (W/WASHERS) M5X25	4	
48	984-360	HANDLE (A)	1	
49	953-327	CORD ARMOR D8.8	1	
50	500-413Z	CORD	1	(CORD ARMOR D8.8)
51	960-266	CORD CLIP	1	

PARTS

D 13YA

ITEM NO.	CODE NO.	DESCRIPTION	NO. USED	REMARKS	
52	984-750	TAPPING SCREW (W/FLANGE) D4X16	2		
53	981-612Z	CARBON BRUSH (AUTO STOP TYPE) (1 PAIR)	2		
54	935-829	BRUSH CAP	2		
55	955-256	STOP PLATE	2		
56	991-510	BRUSH TERMINAL	1		
57A		CAUTION PLATE	1		
58	982-805Z	PILLAR TERMINAL (B)	1		
59	991-513	REVERSING SWITCH	1		
60	981-821	SWITCH (1P SCREW TYPE) W/O LOCK	1		
61	991-511	HANDLE (B)	1		
62	982-095	TAPPING SCREW (W/WASHER) D4X20	1		
63	930-804	TERMINAL M4.0 (10 PCS.)	1		
64	360-012U	ARMATURE ASSY 115V	1	INCLUD.30	
65	991-500	FAN GUIDE	1		
66	991-507	BOTTOM COVER	1		
67	629-VVM	BALL BEARING 629VVMC2EPS2L	1		

STANDARD ACCESSORIES

ITEM NO.	CODE NO.	DESCRIPTION	NO. USED	REMARKS	
501	971-129	STEEL CASE	1		
502	957-683	WRENCH (HEX. SOCKET 10/13MM)	1		

