



3/8" ANGLE DRILL

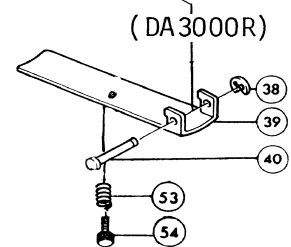
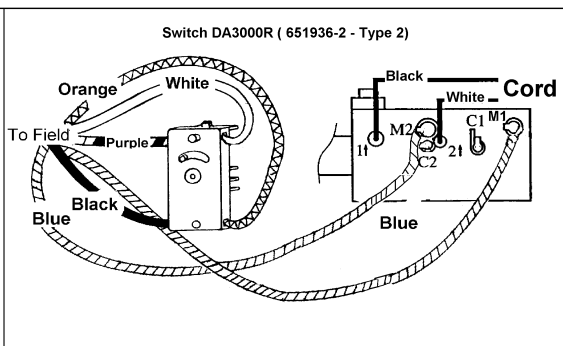
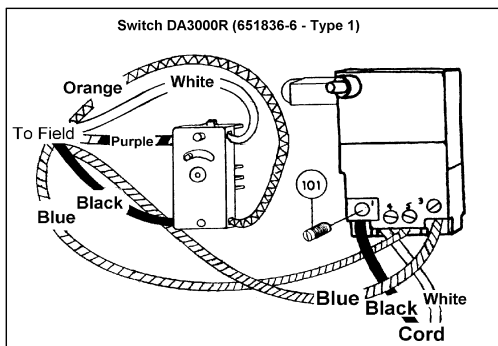
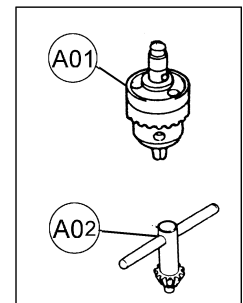
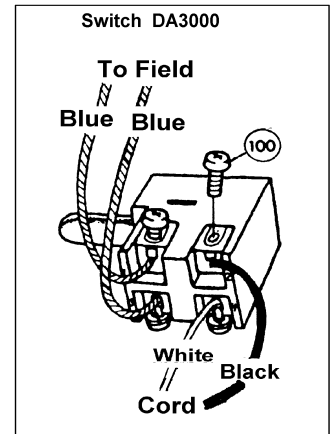
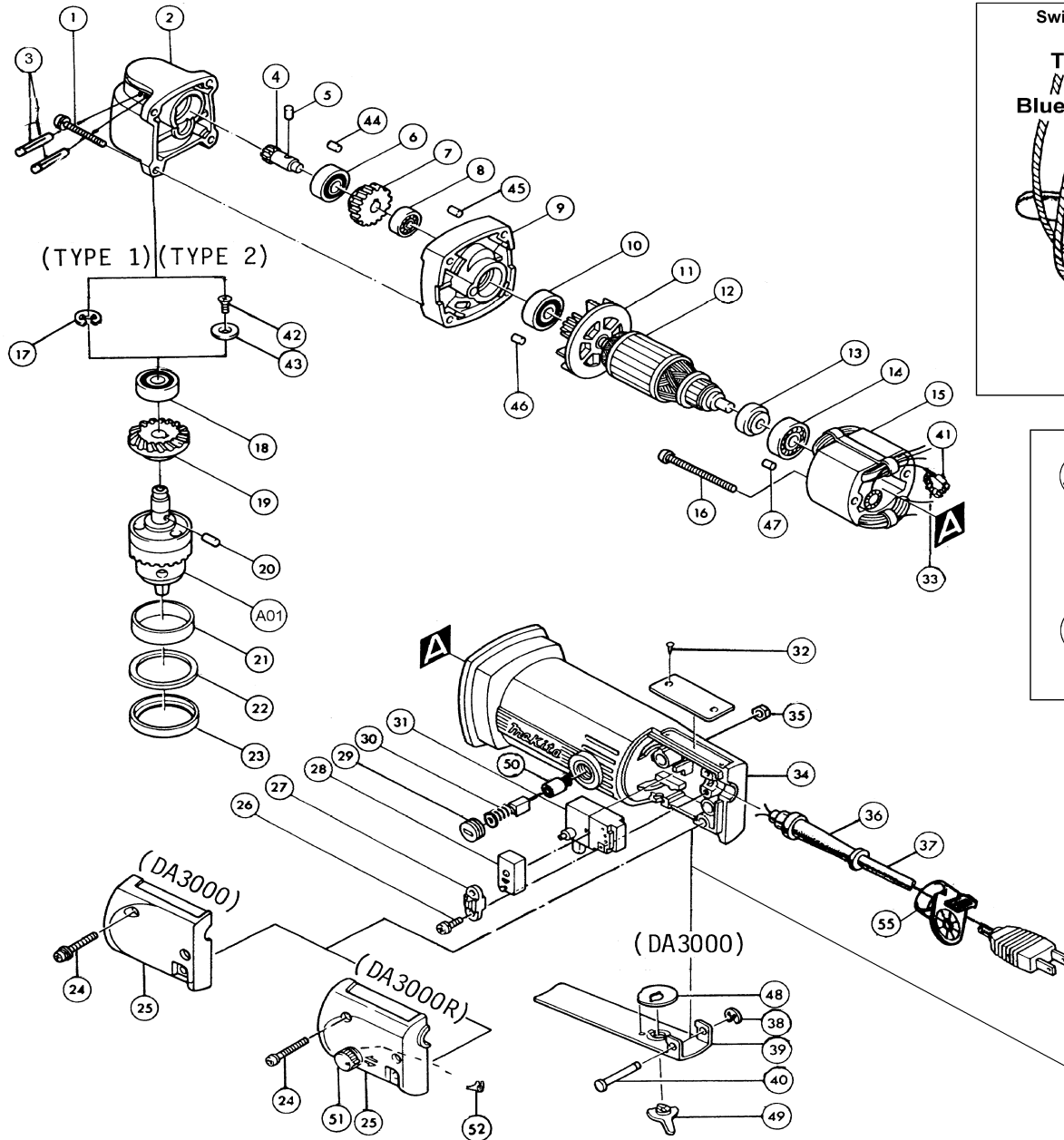
Model DA3000*

(Discontinued in 1985)

(Constant Speed)

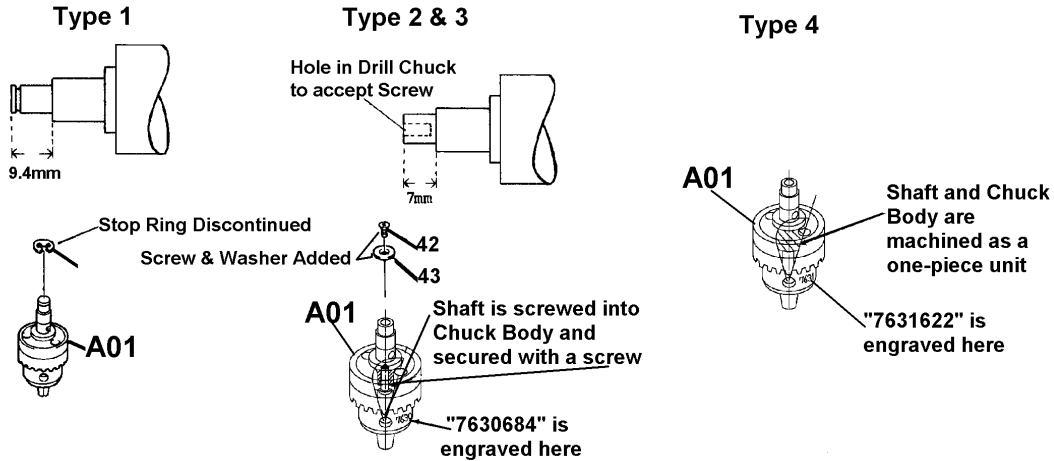
Model DA3000R

(Variable Speed/Reversing)



SERVICE CHANGES

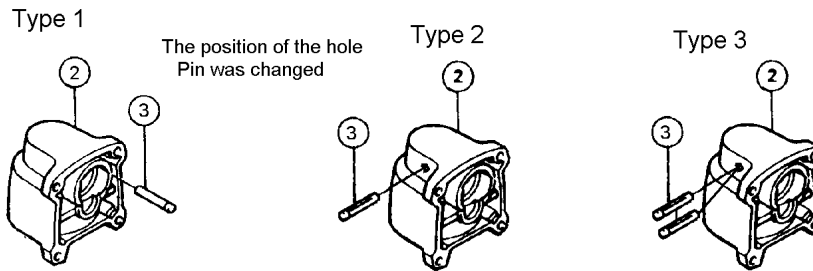
1. Change on Drill Chuck.



Item No.	Description	Type 1	Type 2	Type 3	Type 4
17	Stop Ring	961013-5	(Discontinued)		
42	(+) Countersunk Head Screw M4x12	-----	251304-5 (Added)		
43	Washer 4	-----	253969-9 (Added)		
A01	3/8" Drill Chuck	763059-5	763068-4		193443-4
	Serial No. DA3000	~ 37373E	37374E ~ April 1993		-----
	Serial No. DA3000R	~ 7020E	7021E ~ 384264E		384265E ~

Above parts are completely interchangeable as a set.

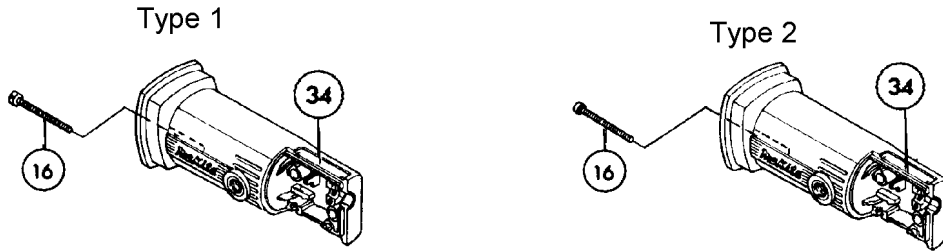
2. Change on Gear Housing and Pin.



Item No.	Description	Type 1	Type 2	Type 3	Type 4
2	Gear Housing	315267-0 (No Longer Available)	157549-2 (No Longer Available)	159272-5	
3	Pin	256109-8 Pin 4 (2pcs) (No Longer Available)	951129-4 (No Longer Available)	Roll Pin 4-36 (1pc)	Roll Pin 4-36 (2pcs) (White Color)
	Serial No.	~ 57566E	57567E ~	No Type 3 Sold	
	Serial No.	~ 16114E	16115E ~ 139388E	139389E ~ 164679E	No Type 4 Sold
					256745-0 Pin 4 (2pcs) (Golden Color)
					164680E ~

Above parts are completely interchangeable as a set.

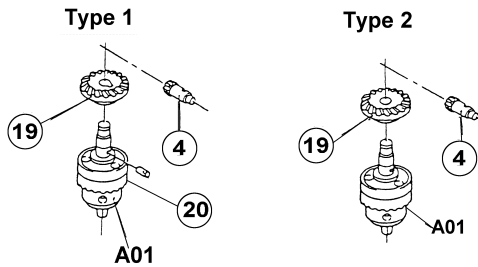
3. Change on Hex Bolt/Tapping Screw and Motor Housing.



Item No.	Description	Type 1	Type 2
16	Hex Bolt/Tapping Screw	925183-4 - (+) Hex Bolt M4x55	265891-8 - Tapping Screw BT 4x55
34	Motor Housing	156766-1 (DA3000) (No Longer Available) 156804-9 (DA3000R) (No Longer Available)	157720-8 (DA3000) 157722-4 (DA3000R)
	Serial No. DA3000R	~ 45902E	45903E ~

DA3000 has Type 1 only.

4. Change on Gear etc.....



Item No.	Description	Type 1	Type 2
4	Spiral Bevel Gear	221342-1 (10) (No Longer Available)	226751-9 (7)
19	Spiral Bevel Gear	221343-9 (36) (No Longer Available)	226752-7(24)
20	Pin 5	256023-8	-----
	Serial No. DA3000	---	---
	Serial No. DA3000R	~269705E	269706E ~

DA3000 Tools sold in Canada have only Type 1 Parts.
Above parts are completely interchangeable as a set.