



SERVICE PARTS LIST

BUL. 54-06-0300

1/4" SPEED CONTROL DRILL

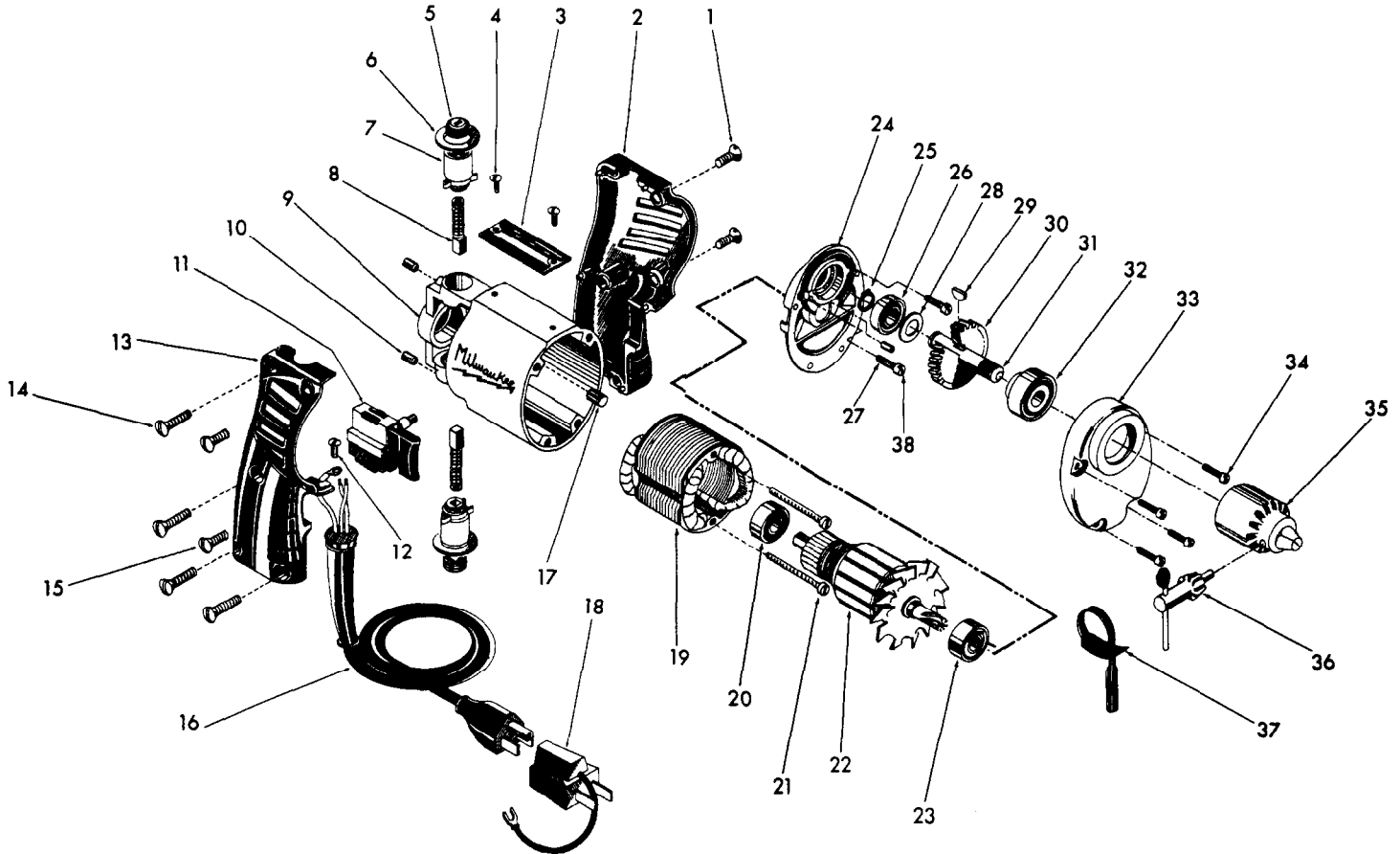
REVISED BUL 6402-1	DATE FEB. '68
-----------------------	------------------

Catalog No. 0102

Starting Serial No. 402-1001

WIRING INSTR.

Both Model and Serial No. must be furnished to obtain correct parts.



ILLUSTRATED PARTS

FIG.	PART NO.	DESCRIPTION OF PART	NO.REQ.	FIG.	PART NO.	DESCRIPTION OF PART	NO.REQ.
1	06-81-3600	8-32x3/8 Oval Hd. Handle Mtg.Scrcs.	(2)	20	02-04-0740	Ball Bearing	
2	31-44-0111	L. H. Handle Half		21	06-81-5950	6-32 x 1-7/8 Fil. Hd. Field Screws	(2)
3	12-98-0600	Name Plate		22	16-22-1150	Armature Assy.	
4	06-81-4300	3-48x3/16 Rd.Hd. Name Plate Scrcs.	(2)	23	02-04-0740	Ball Bearing	
5	23-44-0020	Brush Retaining Cap	(2)	24	28-28-0941	Diaphragm	
6	23-86-0070	Insulating Washer	(2)	25	34-60-0700	Spindle Retaining Ring	
7	22-22-0251	Brush Holder Assy.	(2)	26	02-08-0375	Ball Bearing	
8	22-18-0360	Carbon Brush Assy.	(2)	27	45-30-0070	Ball Bearing Retaining Slug	
9	28-50-6091	Motor Housing		28	45-88-0250	Washer	
10	06-83-0100	10-32 x 1/4 Hd'less Slotted Br.Hd.Scrcs.	(2)	29	06-42-0400	Woodruff Key	
11	23-66-0600	Speed Control Switch		30	32-75-1901	Spindle Gear	
12	06-81-8625	6-32 x 1/4 (Bronze) Rd. Hd. Ground Scr.		31	38-50-3451	Spindle	
13	31-44-0100	R. H. Handle Half		32	02-40-1000	Ball Bearing	
14	06-81-3650	8-32 x 3/4 Oval Hd. Handle Mtg. Scrcs.	(4)	33	28-14-1001	Gear Case	
15	06-81-3600	8-32 x 3/8 Oval Hd. Handle Mtg. Scrcs.	(2)	34	06-81-6300	8-32 x 7/8 Fil. Hd. Sems Gear Case Scrcs.	(4)
16	22-64-0450	Cord Set		35	48-66-0260	Chuck	
17	45-30-0120	Ball Bearing Ret. Slug		36	48-66-3200	Chuck Key	
18	48-03-0010	Attachment Plug Adaptor		37	48-66-4080	Key Holder	
19	18-22-1030	Field		38	06-81-6150	8-32 x 1/2 Fil. Hd. Sems Diaphragm Scr.	(2)