



SERVICE PARTS LIST

BULLETIN NO.
55-08-1187

SPECIFY CATALOG NO. AND SERIAL NO. WHEN ORDERING PARTS		REVISED BULLETIN	DATE
1/2" REVERSING DRILL			June '91
CATALOG NO. 1101-3	STARTING SERIAL NO. 493-132000	WIRING INSTRUCTION 58-01-0213	

EXAMPLE:
 Component Parts (Small #)
 Are Included When Ordering
 The Assembly (Large #).

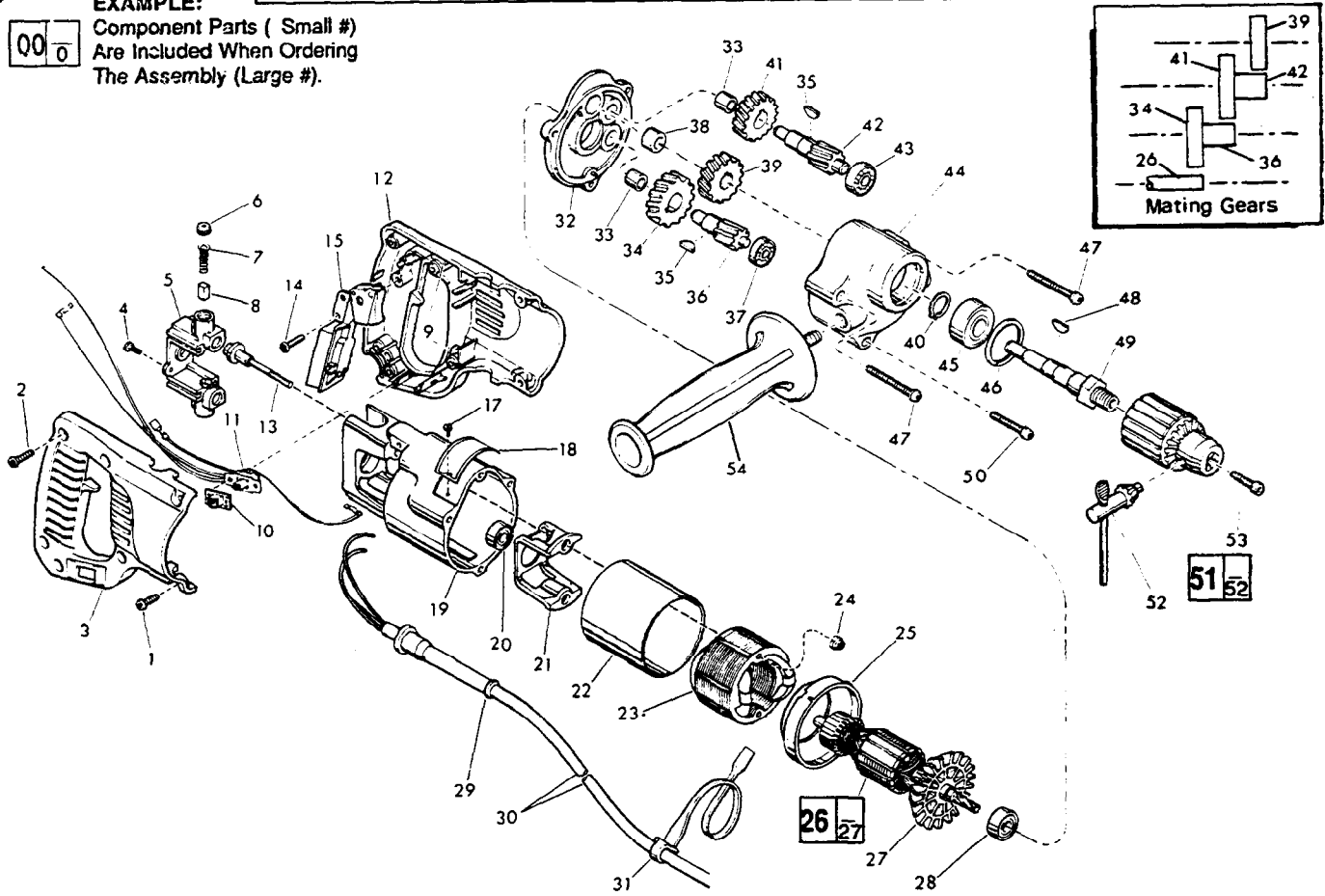


FIG.	PART NO.	DESCRIPTION OF PART	NO. REQ.
1	06-82-5316	8-32x1/2" Slot Pan Hd. Torx Screw	(4)
2	06-82-7270	8-16 x 5/8" Pan Hd. Plastite Torx Screw	(5)
3	31-44-1467	Right Handle Half	(1)
4	06-95-0075	6-32 x 3/8" Truss Hd. Taptite Screw	(2)
5	22-22-1380	Brush Holder Assembly	(1)
6	23-44-0190	Brush Retaining Cap	(2)
7	23-52-0160	Brush Spring	(2)
8	22-16-0375	Carbon Brush	(2)
9	14-46-1001	Foam Pad Kit-10 Slugs	(2)
10	31-12-0196	Switch Cap	(1)
11	23-66-1875	Switch Assembly	(1)
12	14-34-0422	Handle Assembly	(1)
13	06-81-1060	8-32 x 2-1/4" Field Bolt	(2)
14	06-82-7270	8-16 x 5/8" Pan Hd. Plastite Torx Screw	(1)
15	23-66-0167	On-Off Switch	(1)
17	06-85-0200	Nameplate Screw	(2)
18	12-99-0065	Nameplate Blank	(1)
19	28-50-6211	Motor Housing	(1)
20	02-04-0845	Ball Bearing	(1)
21	31-55-0030	Coil Shield	(1)
22	23-16-0456	Field Insulator	(1)
23	18-36-0200	240 V. Field	(1)
24	06-57-2975	8-32 Flexlock Hex Nut	(2)
25	31-05-0050	Baffle	(1)
26	16-36-0325	240 V. Armature	(1)
27	22-84-0531	Fan Assembly	(1)
28	02-04-0911	Ball Bearing	(1)
29	44-76-0210	Cord Protector	(1)
30	22-64-4480	Cord Set	(1)
31	48-66-4040	Key Holder	(1)

FIG.	PART NO.	DESCRIPTION OF PART	NO. REQ.
32	28-28-0611	Diaphragm	(1)
33	02-50-1640	Needle Bearing	(2)
34	32-40-1241	Intermediate Gear	(1)
35	06-42-0800	Woodruff Key	(2)
36	36-66-2801	Intermediate Shaft	(1)
37	02-04-0640	Ball Bearing	(1)
38	02-50-2440	Needle Bearing	(1)
39	32-75-2061	Spindle Gear	(1)
40	34-60-1200	Retaining Ring	(1)
41	32-75-2041	Spindle Gear	(1)
42	36-66-4002	Intermediates Shaft	(1)
43	02-04-0820	Ball Bearing	(1)
44	28-14-1920	Gear Case	(1)
45	02-04-1536	Ball Bearing	(1)
46	34-80-2500	Retaining Ring	(1)
47	06-82-5502	8-32 x 2-1/4" Pan Taptite Torx	(2)
48	06-42-1600	Woodruff Key	(1)
49	38-50-5470	Spindle	(1)
50	06-82-5404	8-32 x 1-3/8" Pan Taptite Torx	(1)
51	48-66-1365	1/2" Chuck	(1)
52	48-66-3280	Chuck Key	(1)
53	06-75-3150	1/4-20 x 1 L.H. Skt. Hd. Cap Screw	(1)
54	43-62-0875	Side Handle	(1)

FIG. LUBRICATION:

44 3-1/4 Oz. Type "A" Grease, No. 49-08-0800.

MILWAUKEE ELECTRIC TOOL CORPORATION
 13135 W. LISBON RD., BROOKFIELD, WI 53005