

OPERATING INSTRUCTIONS AND PARTS LIST FOR

CATALOG NUMBER
4612



MILWAUKEE ELECTRIC TOOL CORP.

AC ALTERNATOR

DEPENDABLE POWER

WHEN ORDERING REPAIR PARTS, ALWAYS GIVE THE FOLLOWING
INFORMATION AS SHOWN IN THIS LIST:

- | | |
|-----------------------------------|------------------------------------|
| 1. M.E.T.CO. PART NUMBER | 3. M.E.T.CO. - CAT. NO. 4612 |
| 2. The PART NAME | 4. The NAME of Item: AC ALTERNATOR |
| 5. STARTING SERIAL NO. 508 - 1104 | |

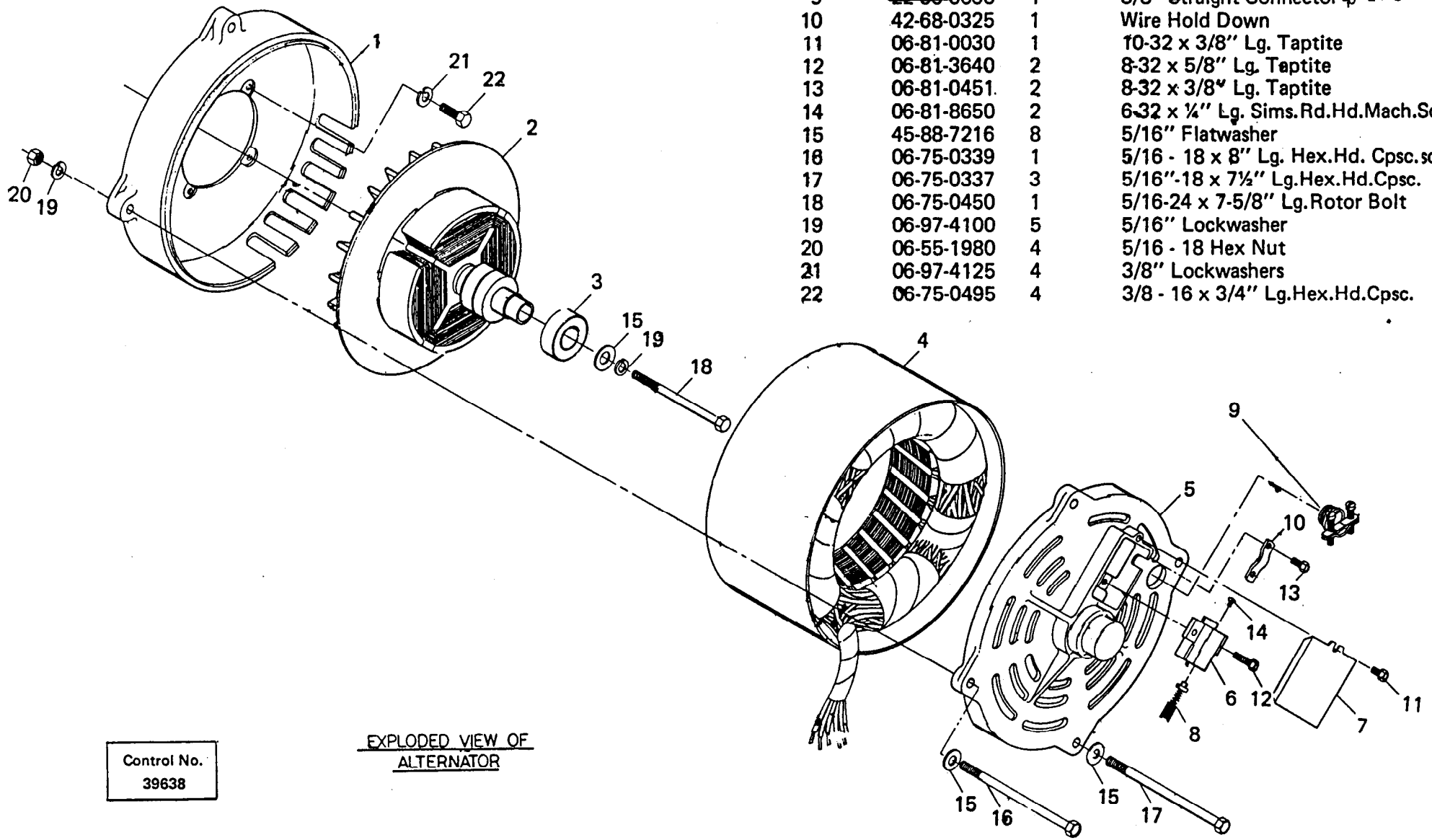
**MILWAUKEE ELECTRIC TOOL CORPORATION
13135 WEST LISBON ROAD
BROOKFIELD, WISCONSIN 53005**



Printed in USA-100

IMPORTANT . . . SAVE THIS FOR FUTURE REFERENCE

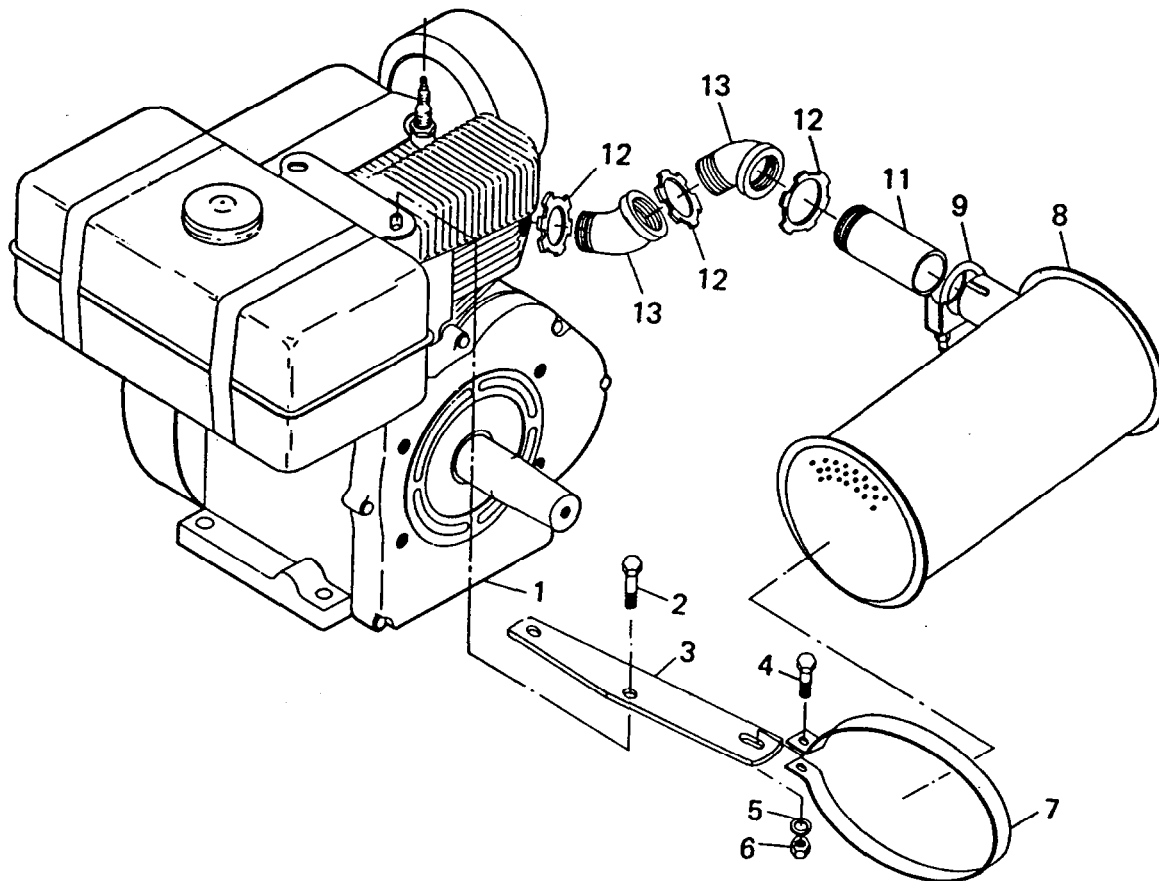
Item	Part No.	Req'd	Description
1	42-04-0475	1	Adaptor Housing
2	23-40-0391	1	Rotor and Fan Assembly
3	02-04-1545	1	Bearing
4	23-58-0471	1	Stator Assembly
5	45-60-0345	1	Rear Bearing Carrier
6	22-20-0220	1	Brush Holder
7	42-92-0345	1	Brush Inspection Cover
8	22-18-0340	2	Brush Assembly
9	22-56-0060	1	3/8" Straight Connector \varnothing 22-56-0230
10	42-68-0325	1	Wire Hold Down
11	06-81-0030	1	10-32 x 3/8" Lg. Taptite
12	06-81-3640	2	8-32 x 5/8" Lg. Taptite
13	06-81-0451	2	8-32 x 3/8" Lg. Taptite
14	06-81-8650	2	6-32 x 1/4" Lg. Sims.Rd.Hd.Mach.Sc.
15	45-88-7216	8	5/16" Flatwasher
16	06-75-0339	1	5/16 - 18 x 8" Lg. Hex.Hd. Cpssc.sc.
17	06-75-0337	3	5/16"-18 x 7 1/2" Lg.Hex.Hd.Cpsc.
18	06-75-0450	1	5/16-24 x 7-5/8" Lg.Rotor Bolt
19	06-97-4100	5	5/16" Lockwasher
20	06-55-1980	4	5/16 - 18 Hex Nut
21	06-97-4125	4	3/8" Lockwashers
22	06-75-0495	4	3/8 - 16 x 3/4" Lg.Hex.Hd.Cpsc.



Control No.
39638

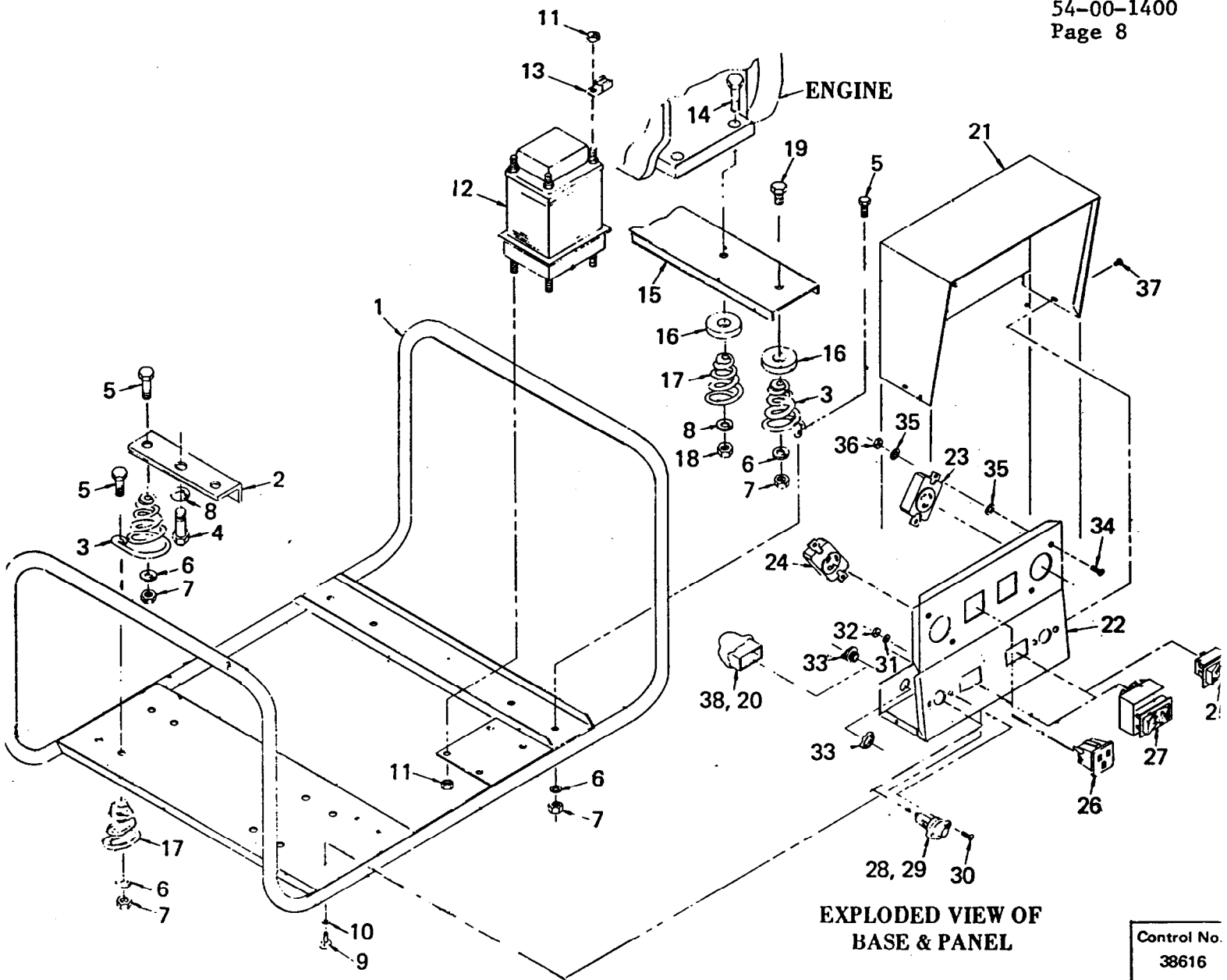
EXPLODED VIEW OF
ALTERNATOR

Item	Part No.	Req'd	Description
1	43-20-4010	1	Wisc. Tra. 12 D Engine
2	06-75-0343	2	Stressproof Bolt
3	44-66-4200	1	Muffler Bracket
4	06-75-0340	1	5/16 - 18 x 1" Hex.Hd.Bolt
5	06-97-4100	1	5/16" Lockwasher
6	06-55-1980	1	5/16 - 18 Hex Nut
7	45-56-0135	1	Muffler Strap
8	43-31-0260	1	Muffler
9	42-68-0315	1	"U" Bolt
10	42-68-0320	1	Saddle
11	43-33-0255	1	1" NPT x 3" Lg.Nipple
12	06-57-7480	3	1" Locknut, Pipe
13	43-33-0260	2	1" NPT x 45° Street Elbow



Control No.
38615

EXPLODED VIEW OF ENGINE ACCESSORIES



EXPLODED VIEW OF
BASE & PANEL

Control No.
38616

Item	Part No.	Req'd	Description	Item	Part No.	Req'd	Description
1	45-60-0340	1	Mounting Base	21	45-12-0280	1	Panel Shroud
2	42-36-0905	1	Alternator Support	22	23-35-0165	1	Control Panel
3	40-50-6900	4	Springs	23	23-33-0240	1	125 Volt Twist Lik Outlet
4	06-75-0495	1	3/8 - 16 x 3/4" Hex.Hd.Cpsc.	24	23-33-0235	1	250 Volt Twist Lik Outlet
5	06-75-0340	6	5/16 - 18 x 1" Hex.Hd.Cpsc.	25	23-66-0950	1	S.P.S.T. Switch
6	06-97-4100	8	5/16" Lockwasher	26	23-33-0130	2	115 Volt Parallel Blade Outlet
7	06-55-1980	8	5/16 - 18 Hex. Nut	27	23-66-0945	1	3 P.D.T. Switch
8	06-97-4125	3	3/8 Lockwasher	28	23-04-0060	2	Fuse Holder
9	06-81-4652	4	10 - 32 x 1/2" Rd.Hd.Mach.Sc.	29	22-89-0065	2	Fuse 15A
10	06-97-3400	4	No. 10 Lockwasher	30	06-81-5630	4	8-32 Pan Hd. Mach.Sc.
11	06-57-3000	5	No. 10 Lokut Nut	31	06-97-3200	4	No. 8 Lock Washer
12	23-81-0200	1	Reactor Assembly	32	06-55-0825	4	8-32 Hex Nut
13	23-74-0480	1	Ground Lug	33	22-56-0060	2	3/8 Straight Connector
14	06-75-0625	2	3/8 - 16 x 2" Lg.Hex.Hd.Mach.Sc.	34	06-81-4212	4	10-32 x 1/2" Lg.Pan Hd.Mach.Sc.
15	42-36-0910	1	Engine Support	35	06-97-0870	8	No. 10 Lockwasher
16	45-36-0775	4	Spacer	36	06-55-1100	4	10-32 Hex Nut
17	40-50-7725	6	Spring	37	06-81-0275	4	Whiz Sc. 10-32 x 1/2" Lg.
18	06-55-2400	2	3/8 - 16 Hex Nut	38	42-36-0912	1	Rectifier Support
19	06-75-0600	2	3/8 - 16 x 1-3/4" Lg.Hex.Hd.Cpsc.	23-33-0250	1	20 Amp-250 volt Twist Lock Plug (not showr	
20	23-38-2560	1	Rectifier	23-33-0245	1	20 Amp-115 volt Twist Lock Plug (not showr	