



# SERVICE PARTS LIST

**BUL. 54-24-2021**

## ELECTRIC HAMMER

REVISED BUL. 54-24-2021 DATE Feb. '72

**Catalog No. 5360**

Starting Serial No. **38-3100**

WIRING INSTR. **58-01-0170**

Both Model and Serial No. must be furnished to obtain correct parts.

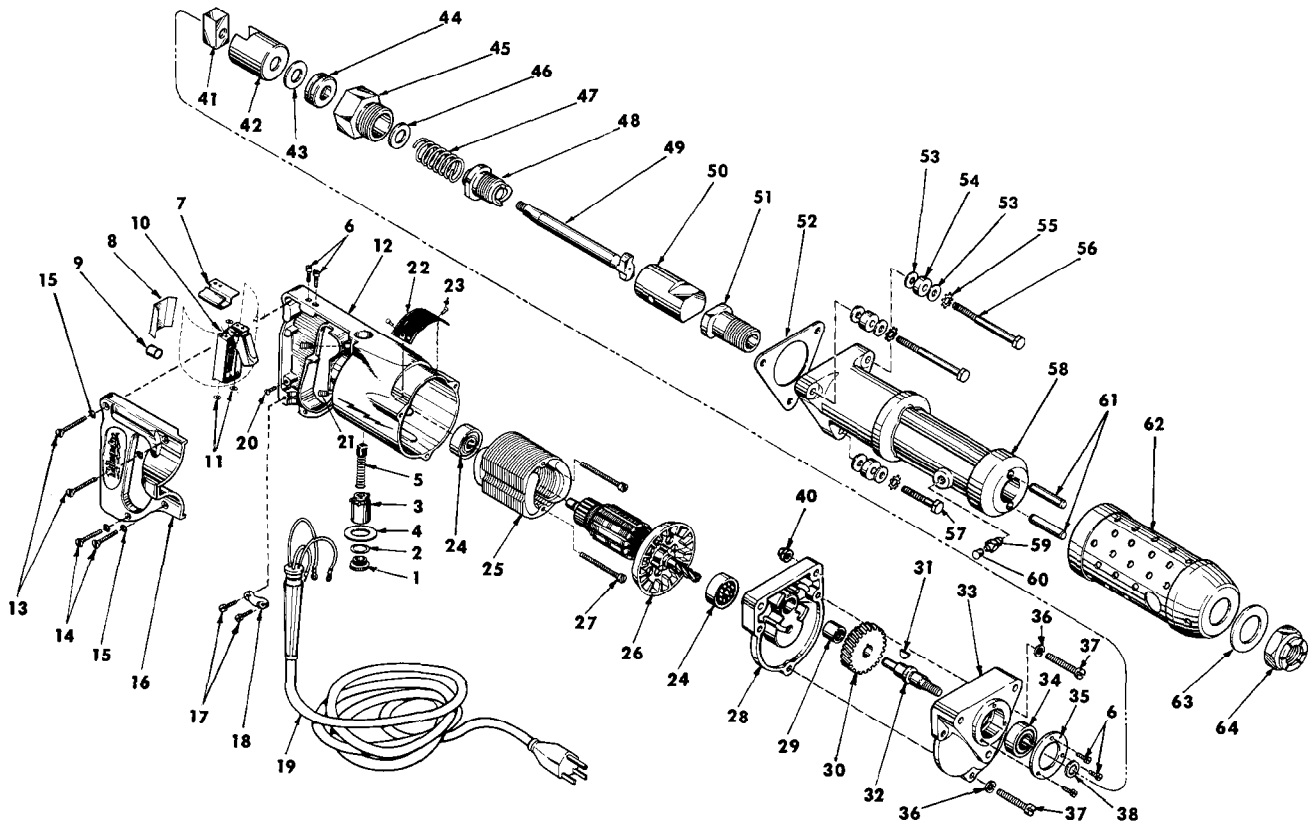


FIG.	PART NO.	DESCRIPTION OF PART	NO. REQ.	FIG.	PART NO.	DESCRIPTION OF PART	NO. REQ.
1	23-44-0060	Brush Retaining Screw	(2)	34	02-04-1250	Ball Bearing	(1)
2	23-86-0050	Washer	(2)	35	44-66-0060	Cover Plate	(1)
3	22-22-0080	Brush Holder	(2)	36	06-97-3600	Lock Washer	(3)
4	23-86-0110	Washer	(2)	37	06-81-1475	12-24x1-1/8 Fil. Hd. Screw	(3)
5	22-18-0100	Carbon Brush	(2)	38	45-88-0080	Chuck Washer	(1)
6	06-81-5800	6-32x5/16 Fil. Hd. Sem	(5)	39	14-12-0110	Cylinder Assy. (Incl. Figs. 40 thru 64)	
7	42-68-0225	Wire Clamp	(1)	40	06-57-5000	1/4-20 Lock Nut	(2)
8	23-16-0340	Switch Insulator	(1)	41	43-12-0050	Male Driver	(1)
9	45-30-0050	Slug	(1)	42	43-12-0070	Female Driver	(1)
★10	23-66-0580	Switch	(1)	43	45-88-0310	Thrust Washer	} As Required
11	06-97-1800	Switch Lock Washer	(4)	45-88-5340	Thrust Washer		
12	28-50-4401	Motor Housing Assy. (Incl. Figs. 13 thru 16)		45-88-5360	Thrust Washer		
13	06-81-3750	8-32x1 Oval Hd. Screw	(2)	44	02-80-1000	Thrust Bearing	(1)
14	06-81-3700	8-32x7/8 Oval Hd. Screw	(2)	45	44-40-0080	Mechanism Nut	(1)
15	06-97-0800	Lock Washer	(4)	46	45-88-0100	Steel Washer	(1)
16	28-20-3601	Handle Cover	(1)	47	40-50-1100	Compression Spring	(1)
17	06-81-6150	8-32x1/2 Fil. Hd. Sem	(2)	48	42-50-0060	Female Cam	(1)
18	28-17-0400	Clamp Strap	(1)	49	36-10-0501	Cam Shaft	(1)
19	22-64-0170	Cord Set	(1)	50	44-62-0060	Piston	(1)
20	06-81-8625	6-32x1/4 Ground Screw	(1)	51	42-40-0080	Nose Bushing	(1)
21	06-83-2650	1/4-20x3/8 Knrl. Set Screw	(2)	52	43-44-0050	Shock Absorber Gasket	(1)
22	12-98-3100	Nameplate	(1)	53	45-88-5220	Flat Washer	(6)
23	06-85-0200	6x1/4 Rd. Hd. Type Z Screw	(2)	54	45-88-0090	Shock Absorber Washer	(3)
24	02-04-0970	Ball Bearing	(2)	55	06-97-1000	Lock Washer	(3)
25	18-42-1040	115 Volt Field	(1)	56	06-75-0250	1/4-20x2-1/2 Hex. Hd. Cap Screw	(2)
26	16-42-1170	115 Volt Armature	(1)	57	06-75-0200	1/4-20x1-1/4 Hex. Hd. Cap Screw	(1)
27	06-81-6600	8-32x1-3/4 Fil. Hd. Sem	(2)	58	28-25-0141	Hammer Cylinder (Incl. Figs. 59 thru 61)	
28	28-28-0161	Diaphragm	(1)	59	43-33-0050	Grease Fitting	(1)
29	02-50-2110	Needle Bearing	(1)	60	42-52-0100	Lube Cap	(1)
30	32-75-1241	Spindle Gear	(1)	61	44-60-0140	Piston Pin	(2)
31	06-42-1200	Woodruff Key	(1)	62	45-12-0070	Perforated Shield Assy.	(1)
32	38-50-1351	Spindle	(1)	63	45-88-5420	Flat Washer	(1)
33	28-14-0321	Gear Case	(1)	64	44-40-0090	Elastic Stop Nut	(1)