

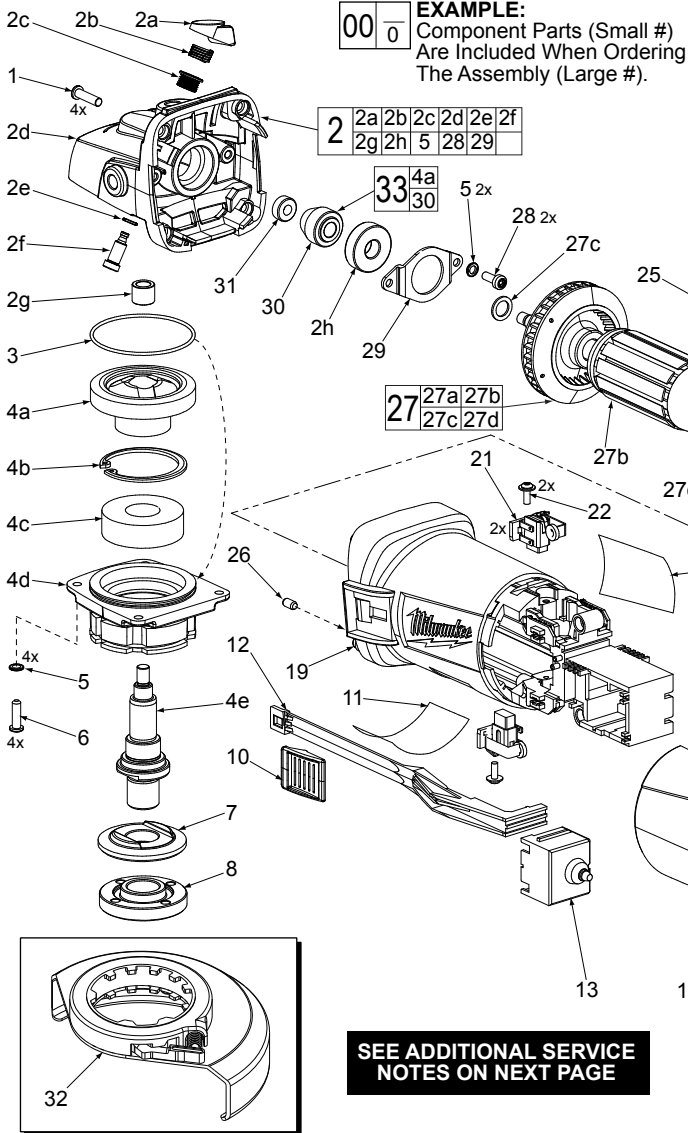


SERVICE PARTS LIST

BULLETIN NO.
55-38-1801

SPECIFY CATALOG NO. AND SERIAL NO. WHEN ORDERING PARTS		REVISED BULLETIN	DATE
4.5" (115mm) ANGLE GRINDER		55-38-1800	Nov. 2014
CATALOG NO.	6148-59A	WIRING INSTRUCTION	
STARTING SERIAL NO.	C43B	SEE PAGE 3	

★ = Part number change from previous service parts list.



SEE ADDITIONAL SERVICE NOTES ON NEXT PAGE

FIG.	PART NO.	DESCRIPTION OF PART	NO. REQ.
16	23-38-0020	Capacitor Assembly	(1)
17	44-76-0210	Cord Protector	(1)
18	22-64-4035	Cordset	(1)
19	31-50-3370	Motor Housing	(1)
20	12-20-0243	Nameplate	(1)
21	22-16-0070	Carbon Brush Assembly	(2)
22	05-88-1100	M3 x 10 Pan Hd. T-10 Screw	(2)
23	18-04-0185	Service Field	(1)
24	42-14-0495	Fan Baffle	(1)
25	05-88-1290	M4 x 76 Pan Hd. T-20 Screw	(2)
26	31-53-0240	Rubber Plug	(1)

- Functionally check Spindle lock Mechanism. Spindle Lock Pin (2f) must return briskly when released from engagement in Gear (4a).
- Orient Insulation Disc (27d) with shoulder facing Ball Bearing (27a) as shown. Exercise caution when installing. Make sure that the Insulation Disc rests against commutator bars with no visible gap.
- Rubber Plug (26) is to be placed in a cavity by the bearing bore in the back of Motor Housing (19).
- Orient the Needle Bearing (2g) such that vendor I.D. is facing the Gear (4a). Press flush ±.25mm from the surface of Gearcase (2d).
- Press the Carbon Brush Assembly (21) into slot of Motor Hsg. (19). Secure with screw (22), torque to 3-6 in./lbs.
- Add a few drops of Red Loctite® 277 to threads of Spindle lock Tube (2c) prior to assembly.
- O-Ring (2e) must be bottomed against flange of Pin (2f) prior to assembly.
- Press Ball Bearing (27a) onto armature shaft until seated on shaft shoulder.

FIG.	PART NO.	DESCRIPTION OF PART	NO. REQ.
1	05-88-1255	M14 x 22 Pan Hd. ST T-20 Screw	(8)
2	14-29-0312	Gearcase Assembly	(1)
2a	42-42-0590	Spindle Lock Button	(1)
2b	40-50-1330	Spring	(1)
2c	42-42-0580	Spindle Lock Tube	(1)
2d	-----	Gearcase	(1)
2e	34-40-0450	O-Ring	(1)
2f	42-60-1660	Spindle Lock Pin	(1)
2g	02-50-0025	Needle Bearing	(1)
2h	02-04-0620	Ball Bearing	(1)
3	34-40-0180	O-Ring	(1)
★ 4a	-----	Spiral Bevel Gear	(1)
4b	34-80-2275	Retaining Ring	(1)
4c	02-04-1150	Ball Bearing	(1)
4d	28-53-0410	Gearcase Cover	(1)
4e	38-50-0130	M14 Output Shaft	(1)
5	05-90-0225	Spring Washer	(6)
6	05-88-1210	M4 x 14 Pan Hd. T-20 Screw	(4)
7	43-05-0055	Inner Disc Flange	(1)
8	44-40-0125	Outer Disc Flange	(1)
10	31-92-0430	Slide Switch Button	(1)
11	10-15-0023	Warning Label	(1)
12	31-92-0470	Switch Pole	(1)
13	23-66-2665	Switch	(1)
15	31-44-0386	Rear Handle Assembly	(1)
15a	31-50-0405	Rear Handle Support	(1)
15b	31-50-0415	Rear Handle Cover	(1)

FIG.	PART NO.	DESCRIPTION OF PART	NO. REQ.
27	16-04-0180	Service Armature Assembly	(1)
27a	02-04-2110	Ball Bearing	(1)
27b	-----	Armature	(1)
27c	45-88-0406	Washer	(1)
27d	-----	Insulator Ring	(1)
28	05-88-1280	M4 x 10 Pan Hd. T-20 Screw	(2)
29	44-66-0450	Bearing Retainer	(1)
★ 30	-----	Bevel Pinion	(1)
31	05-55-0620	M5 Hex Nut	(1)
32	43-54-1070	4.5" T27 Guard	(1)
★ 33	14-29-0025	Gear Set	(1)
	42-62-0110	Side Handle (Not Shown)	(1)
	49-96-0015	Spanner Wrench (Not Shown)	(1)

* **LUBRICATION NOTE:** When servicing the Gears (4a & 30) or the Gearcase (2d), 90-95% of the old grease must be removed prior to new grease being added.

FIG. LUBRICATION (*See lubrication note above):

- 4a,30 Type "Y" Grease, No. 49-08-5270, Must Be Applied To All Gear Teeth.
- 2d,2e Lightly coat with grease O-Ring and bearing bore in Gearcase.
- 2d .4 Ounces (13 Grams) Type "Y" Grease, No. 49-08-5270.

MILWAUKEE ELECTRIC TOOL CORPORATION
13135 W. Lisbon Road, Brookfield, WI 53005
Drwg. 4