



SERVICE PARTS LIST

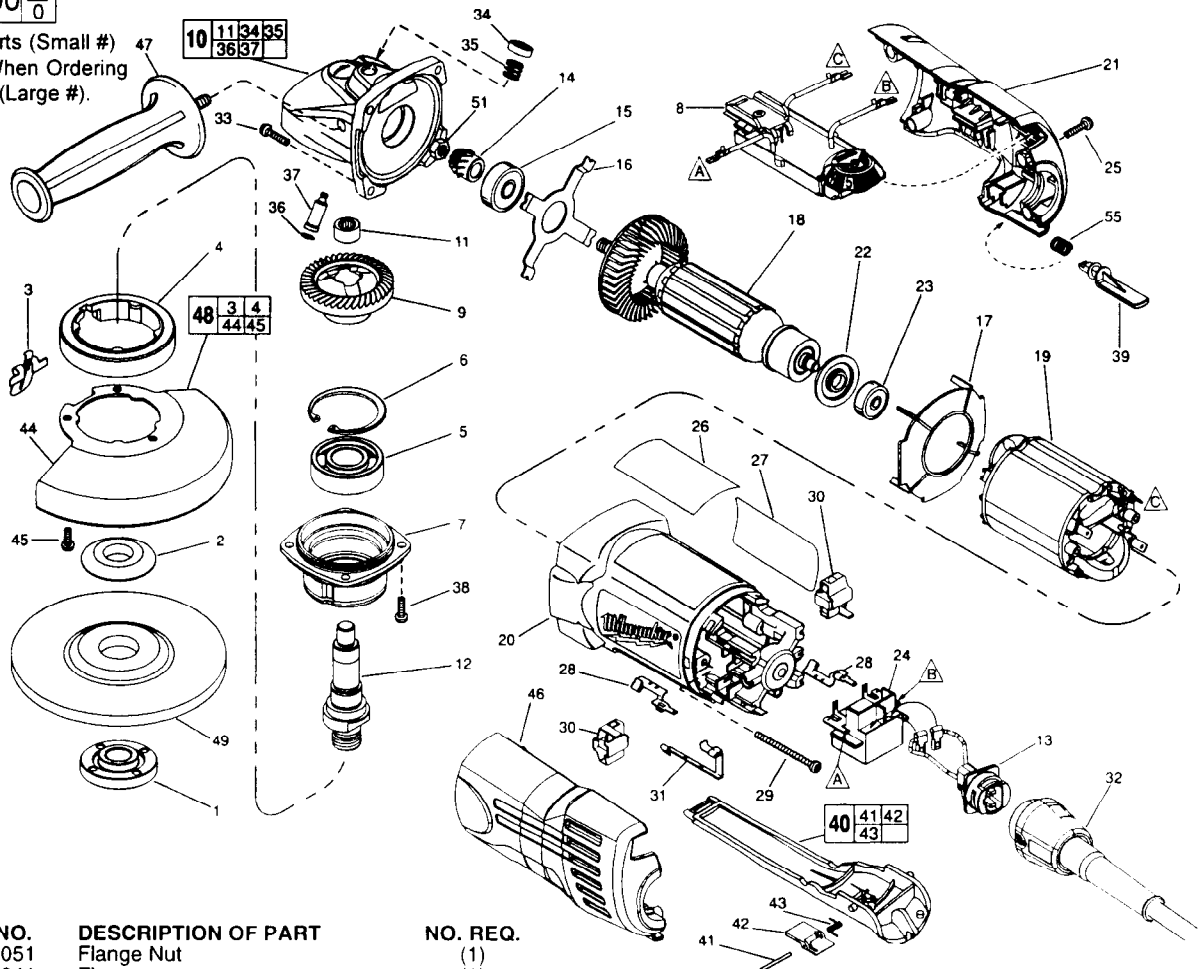
BULLETIN NO.
54-38-3725

| | | | |
|--|-----------------------------|---------------------------------|----------|
| SPECIFY CATALOG NO. AND SERIAL NO. WHEN ORDERING PARTS | | REVISED BULLETIN | DATE |
| 4-1/2" DIAL SPEED SUPER MAG GRINDER | | | Aug. '98 |
| CATALOG NO. 6154-20 | STARTING SERIAL NUMBER 907A | WIRING INSTRUCTION See Below | |

EXAMPLE:

| | |
|----|---|
| 00 | 0 |
|----|---|

Component Parts (Small #)
Are Included When Ordering
The Assembly (Large #).



| FIG. | PART NO. | DESCRIPTION OF PART | NO. REQ. |
|------|------------|---|----------|
| 1 | 49-05-0051 | Flange Nut | (1) |
| 2 | 49-05-0041 | Flange | (1) |
| 3 | 44-20-0325 | Lock Lever | (1) |
| 4 | 45-36-1551 | Spacer | (1) |
| 5 | 02-04-1745 | Ball Bearing | (1) |
| 6 | 34-80-2960 | Retaining Ring - Internal | (1) |
| 7 | 28-52-0222 | Spindle Hub | (1) |
| 8 | 14-20-0910 | Module Assembly | (1) |
| 9 | 32-05-1310 | P.M. Gear | (1) |
| 10 | 25-14-2350 | Gear Case Assembly | (1) |
| 11 | 02-50-2423 | Needle Bearing | (1) |
| 12 | 38-50-5202 | Spindle | (1) |
| 13 | 22-56-0890 | Blade Housing Assembly | (1) |
| 14 | 32-60-1310 | Pinion Gear | (1) |
| 15 | 02-04-2076 | Ball Bearing | (1) |
| 16 | 44-66-5345 | Bearing Retainer Plate | (1) |
| 17 | 42-14-0400 | Baffle | (1) |
| 18 | 16-10-2005 | Armature | (1) |
| 19 | 18-10-2005 | Field | (1) |
| 20 | 31-50-1100 | Motor Housing | (1) |
| 21 | 31-44-0660 | Right Cover | (1) |
| 22 | 23-16-0100 | Commutator Insulator | (1) |
| 23 | 02-04-2080 | Ball Bearing | (1) |
| 24 | 23-66-2401 | Switch | (1) |
| 25 | 06-82-7271 | 6-19 x 7/8" Pan Hd. Plastite T-15 | (4) |
| 26 | 12-20-6207 | Service Nameplate Kit | (1) |
| 27 | 10-98-7091 | Warning Label | (1) |
| 28 | 23-74-1206 | Brush Terminal | (2) |
| 29 | 06-82-7421 | 6-19 x 3-1/4" Pan Hd. Slit. Plast. T-15 | (2) |
| 30 | 22-20-0920 | Brush Holder Assy. (Incl. Carbon Brush) | (2) |
| 31 | 23-74-1201 | Switch Terminal | (1) |
| 32 | 48-76-5010 | Quik-Lok Cord Set | (1) |
| 33 | 06-82-7326 | 8-16 x 1" Pan Hd. Slit. Plast. T-20 | (4) |
| 34 | 31-12-0205 | Cap | (1) |
| 35 | 40-50-8650 | Compression Spring | (1) |
| 36 | 34-40-4300 | O-Ring | (1) |
| 37 | 44-60-0845 | Lock Pin | (1) |
| 38 | 06-82-5316 | 8-32 x 1/2" Pan Hd. Slit. Tapt. T-20 | (4) |

| FIG. | PART NO. | DESCRIPTION OF PART | NO. REQ. |
|------|------------|---------------------------------------|----------|
| 39 | 42-42-0030 | Lock On Button | (1) |
| 40 | 31-92-0320 | Paddle Assembly | (1) |
| 41 | 06-65-1915 | Pin | (1) |
| 42 | 42-42-0390 | Lock-Off Button | (1) |
| 43 | 40-50-8750 | Torsion Spring | (1) |
| 44 | 28-41-1020 | Hood | (1) |
| 45 | 06-82-7251 | 8-16 x 3/8" Pan Hd. Slit. Plast. T-20 | (3) |
| 46 | 31-44-0665 | Left Cover | (1) |
| 47 | 49-15-0310 | Side Handle | (1) |
| 48 | 49-12-0365 | Guard Assembly | (1) |
| 49 | ----- | 4-1/2" Disc - Select From Catalog | (1) |
| 51 | 06-55-3850 | 10-32 Hex Nut | (1) |
| 55 | 40-50-0921 | Lock On Spring | (1) |
| | 49-96-7205 | Spanner Wrench | (1) |

FIG. LUBRICATION:
9,14 Type "O" Grease, No. 49-08-4200, Must Be Applied To All Gear Teeth.
10 18-21 Grams Type "O" Grease, No. 49-08-4200.

FIG. NOTES:
7 Position The Spindle Hub With The Side That Has The Word "Back" Orientated Toward The Rear Of The Tool.
8 Connect Terminals Flagged "A" & "B" On Module Assembly To The Corresponding Terminals Flagged On The Switch. Connect The Terminal Flagged "C" On The Module To The Terminal Flagged "C" On The Field.
11 Press .09" Below Casting Surface With Lettering Readable After Assembly.
13 Blade Hsg. Leads Are Interchangeable On Switch Connections. Torque To 25-35 In./Lbs.

MILWAUKEE ELECTRIC TOOL CORPORATION
13135 W. Lisbon Road, Brookfield, WI 53005
Drwg. 3