



SERVICE PARTS LIST

BULLETIN NO.
55-38-3725

SPECIFY CATALOG NO. AND SERIAL NO. WHEN ORDERING PARTS		REVISED BULLETIN	DATE
115mm DIAL SPEED SUPER MAG GRINDER			Feb. 2000
CATALOG NO. 6154-50	STARTING SERIAL NUMBER 907A	WIRING INSTRUCTION See Below	

EXAMPLE:

00	0
----	---

 Component Parts (Small #) Are Included When Ordering The Assembly (Large #).

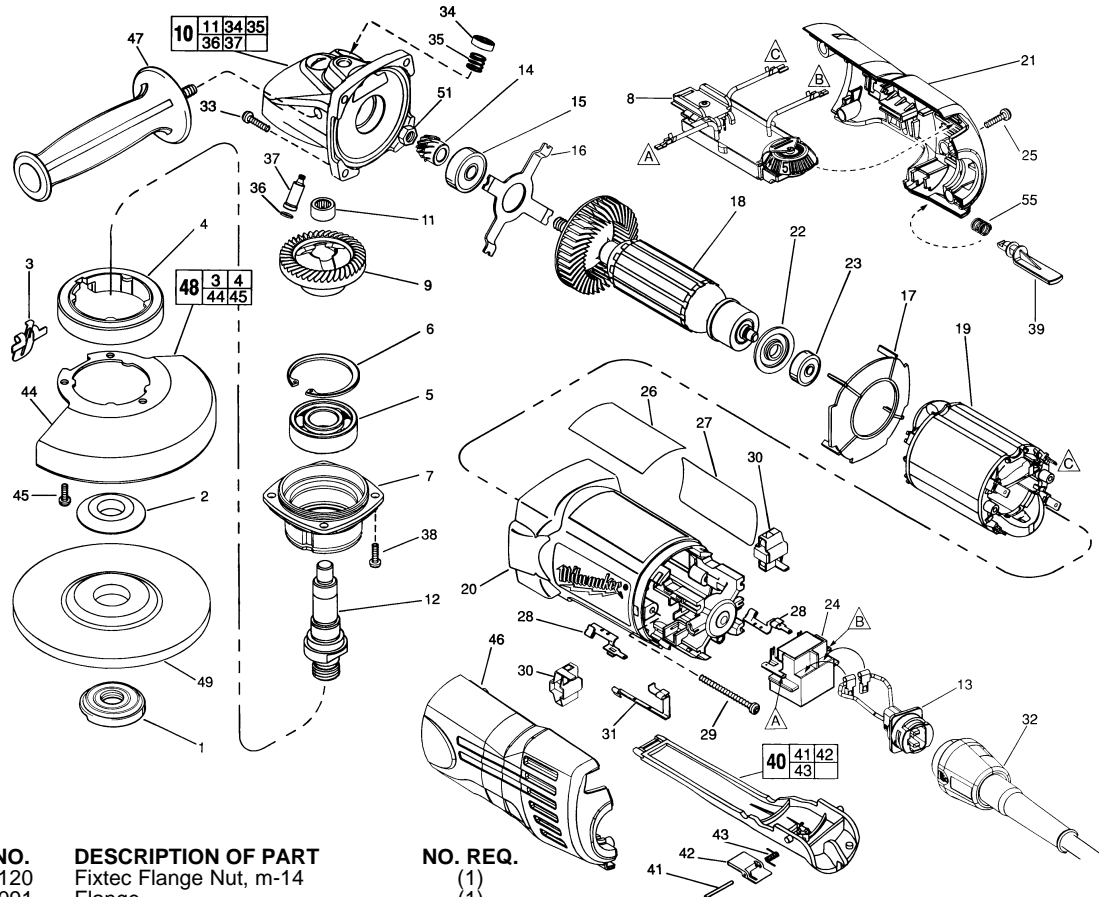


FIG.	PART NO.	DESCRIPTION OF PART	NO. REQ.
	1	05-59-0120	(1)
	2	49-05-0091	(1)
	3	44-20-0325	(1)
	4	45-36-1551	(1)
	5	02-04-1745	(1)
	6	34-80-2960	(1)
	7	28-52-0222	(1)
	8	14-20-0915	(1)
	9	32-05-1310	(1)
	10	25-14-2350	(1)
	11	02-50-2423	(1)
	12	38-50-6065	(1)
	13	22-56-0691	(1)
	14	32-60-1310	(1)
	15	02-04-2076	(1)
	16	44-66-5345	(1)
	17	42-14-0400	(1)
	18	16-04-2005	(1)
	19	18-04-2005	(1)
	20	31-50-1100	(1)
	21	31-44-0660	(1)
	22	23-16-0100	(1)
	23	02-04-2080	(1)
	24	23-66-2407	(1)
	25	06-82-7271	(4)
	26	-----	(1)
	27	10-15-6148	(1)
	28	23-74-1206	(2)
	29	06-82-7421	(2)
	30	22-20-0910	(2)
	31	23-74-1201	(1)
	32	48-76-5012	(1)
★	32	22-64-0684	(1)
	33	06-82-7326	(4)
	34	31-12-0205	(1)
	35	40-50-8650	(1)
	36	34-40-4300	(1)
	37	44-60-0845	(1)
	38	06-82-5316	(4)

FIG.	PART NO.	DESCRIPTION OF PART	NO. REQ.
	39	42-42-0030	(1)
	40	31-92-0320	(1)
	41	06-65-1915	(1)
	42	42-42-0390	(1)
	43	40-50-8750	(1)
	44	28-41-1020	(1)
	45	06-82-7251	(3)
	46	31-44-0665	(1)
	47	49-15-0310	(1)
	48	49-12-0365	(1)
	49	-----	(1)
	51	06-55-3850	(1)
	55	40-50-0921	(1)
		49-96-7205	(1)

FIG. 9,14 LUBRICATION:
 Type "O" Grease, No. 49-08-4200, Must Be Applied To All Gear Teeth.
 10 18-21 Grams Type "O" Grease, No. 49-08-4200.

FIG. 7 NOTES:
 Position The Spindle Hub With The Side That Has The Word "Back" Orientated Toward The Rear Of The Tool.
 8 Connect Terminals Flagged "A" & "B" On Module Assembly To The Corresponding Terminals Flagged On The Switch. Connect The Terminal Flagged "C" On The Module To The Terminal Flagged "C" On The Field.
 11 Press 2.3mm Below Casting Surface With Lettering Readable After Assembly.
 13 Blade Hsg. Leads Are Interchangeable On Switch Connections.
 51 Torque To 2.85-4.0 Nm.

MILWAUKEE ELECTRIC TOOL CORPORATION
 13135 W. Lisbon Road, Brookfield, WI 53005
 Drwg. 4