



SERVICE PARTS LIST

BUL. 54-42-2101

SCREWDRIVER

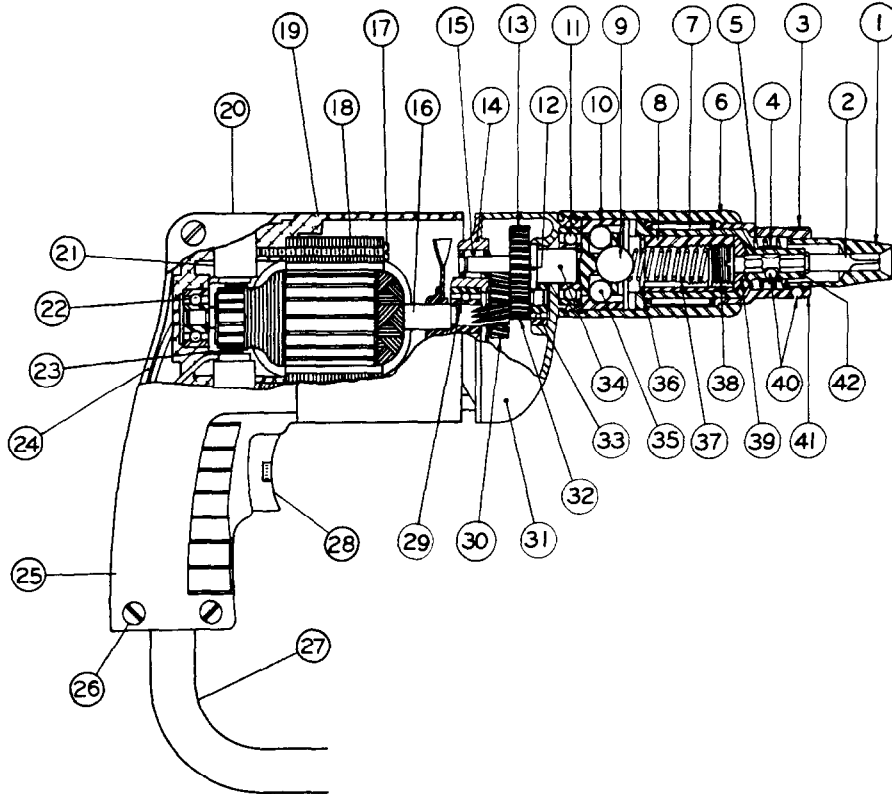
REVISED BUL. 54-42-2100 DATE Aug. '68

Catalog No. **6581-1**

Starting Serial No. **382-1752**

WIRING INSTR. **58-01-0060**

Both Model and Serial No. must be furnished to obtain correct parts.



ILLUSTRATED PARTS

FIG.	PART NO.	DESCRIPTION OF PART	NO.REQ.	FIG.	PART NO.	DESCRIPTION OF PART	NO.REQ.
1	Specify Size	Finder Sleeves		23	22-18-0360	Carbon Brush Assy.	(2)
2	Specify Size	Hexagonal Bits		★ 24	31-44-0211	Left Hand Handle Half	
3	40-50-1800	Finder Retaining Spring		★ 25	31-44-0200	Right Hand Handle Half	
4	40-50-1400	Bit Retaining Spring		★ 26	06-8-1-0400	8-32x3/4 Pan Hd. Handle Mtg. Scr.	(4)
5	40-50-1900	Finder Spring		27	22-64-0450	Cord Set	
6	45-22-0090	Sleeve		28	23-66-0520	Switch	
7	02-50-6440	Needle Bearing		29	02-04-0740	Ball Bearing	
8	43-84-0060	Threaded Insert		30	32-40-1121	Intermediate Gear	
9	02-02-0560	9/16 Dia. Master Ball		31	28-14-0361	Gear Case	
10	42-76-0100	Clutch Collar		32	36-66-0851	Intermediate Pinion Shaft	
11	02-04-1020	Ball Bearing		33	02-04-0640	Ball Bearing	
12	34-60-0600	Spindle Snap Ring		34	38-50-2251	Spindle	
13	32-75-1121	Spindle Gear		35	02-02-0310	5/16 Dia. Driving Balls	(3)
14	28-28-0221	Diaphragm		36	34-60-1700	Retaining Ring	
15	02-50-1640	Needle Bearing		37	40-50-1500	Torque Limiting Spring (Heavy)	
16	16-22-1241	Armature		37A	40-50-1600	Torque Limiting Spring (Medium)	
17	06-81-5950	8-32 x 1-7/8 Fil. Hd. Field Screw	(2)	37B	40-50-1700	Torque Limiting Spring (Light)	
18	18-22-1121	Field		38	45-04-0090	Adjusting Screw	
19	28-50-6091	Motor Housing		39	45-88-0200	Bit Backing Washer	
20	23-44-0020	Brush Retaining Cap	(2)	40	02-02-0150	Bit and Finder Retaining Ball	(2)
21	22-22-0251	Brush Holder Assy.	(2)	41	43-56-0060	Finder Guide	
22	02-04-0740	Ball Bearing		42	42-66-0230	Chuck	

MISCELLANEOUS PARTS NOT SHOWN

PART NO.	DESCRIPTION OF PART	NO.REQ.	PART NO.	DESCRIPTION OF PART	NO.REQ.
02-50-1210	Needle Bearing		12-98-0600	Name Plate	
34-60-2060	Retaining Ring		06-42-0400	Woodruff Key	
06-81-8625	6-32 x 1/4 Rd. Hd. Brass Ground Screw		06-42-0800	Woodruff Key	
48-03-0010	Attachment Plug Adaptor		45-30-0120	Ball Bearing Retaining Slug	
06-81-6550	8-32 x 1 1/2 Fil. Hd. Gear Case Screw Sem.	(2)	06-81-4300	3-48 x 3/16 Rd. Hd. Name Plate Screw	(2)
06-81-6300	8-32 x 7/8 Fil. Hd. Gear Case Screw Sem.	(2)	05-83-0100	10-32 x 1/4 Brush Holder Set Screw	(2)
★ 06-81-0450	8-32x3/8 Pan Hd. Handle Mtg. Scr.	(4)			