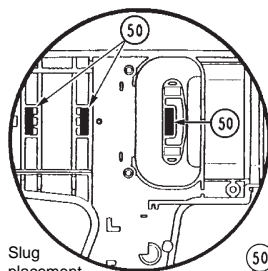




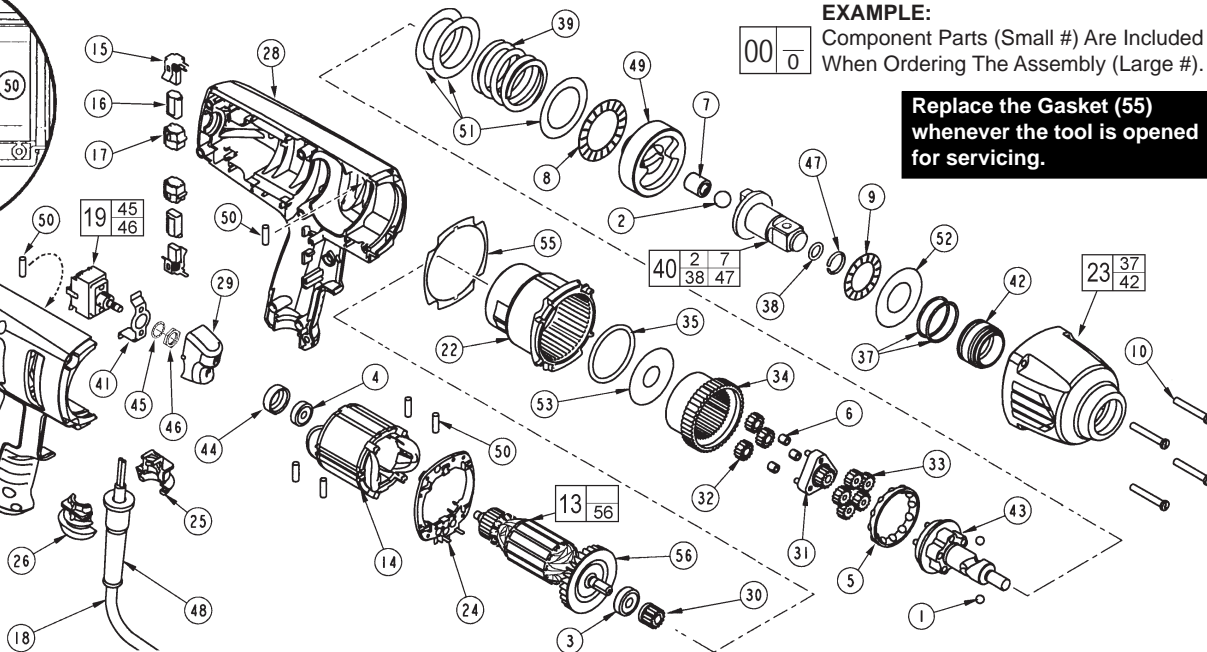
SERVICE PARTS LIST

BULLETIN NO.
54-26-1776

SPECIFY CATALOG NO. AND SERIAL NO. WHEN ORDERING PARTS		REVISED BULLETIN 54-26-1775	DATE Mar. 2008
3/4" D.I. IMPACT WRENCH			
CATALOG NO.	9075-20	STARTING SERIAL NO.	239B
		WIRING INSTRUCTION 58-01-1820	



Slug placement is for both handle halves.



EXAMPLE:
Component Parts (Small #) Are Included When Ordering The Assembly (Large #).

Replace the Gasket (55) whenever the tool is opened for servicing.

FIG.	PART NO.	DESCRIPTION OF PART	NO.REQ.
1	02-02-0250	1/4" Ball	(2)
2	-----	1/2" Ball	(1)
3	02-04-0852	Ball Bearing	(1)
4	02-04-0645	Ball Bearing	(1)
5	02-40-0050	Angular Contact Bearing	(1)
6	02-50-3250	Unit Cage Bearing	(3)
7	-----	Drawn Cup Bearing	(1)
8	02-80-0200	Thrust Bearing	(1)
9	02-80-3256	Thrust Bearing	(1)
10	05-88-5988	K50 x 35mm Screw	(4)
11	06-95-6290	M5 x 2.24 x 18 Plastite Screw	(6)
12	12-20-9070	Service Nameplate	(1)
★ 13	16-10-2275	Armature	(1)
14	18-07-2275	Field	(1)
15	22-18-0040	Brush Assembly	(2)
16	22-20-0110	Brush Tube	(2)
17	22-20-0465	Brush Tube Holder	(2)
18	22-64-0970	Cord	(1)
19	23-66-1305	Switch	(1)
22	28-14-0175	Gearcase	(1)
23	14-38-0100	Front Housing Assembly	(1)
24	31-15-2045	Field Connector	(1)
★ 25	31-17-0261	Cord Clamp	(1)
★ 26	31-17-0271	Cord Clamp	(1)
27	31-44-2176	Right Handle	(1)
28	31-44-2181	Left Handle	(1)
29	31-92-0060	Rocker Trigger	(1)
30	32-60-0150	Sun Gear	(1)
31	32-60-0175	Sun Gear	(1)
32	32-62-0200	Planet Gear	(3)
33	32-62-0215	Planet Gear	(5)
34	32-65-0005	Ring Gear	(1)
35	34-40-0070	O-Ring	(1)
37	-----	O-Ring	(2)
38	34-40-1210	O-Ring	(1)
39	40-50-0241	Spring	(1)
40	14-73-0156	Anvil Assembly	(1)
41	42-36-0275	Switch Bracket	(1)
42	-----	Bushing	(1)
43	14-73-0300	Cam Shaft Assembly	(1)
44	42-96-0015	Bearing Cup	(1)
45	-----	Supplied with Switch	(1)
46	-----	Supplied with Switch	(1)
47	44-90-4540	Friction Ring	(1)
48	44-76-0210	Cord Protector	(1)
49	44-82-0210	Ram	(1)
50	45-30-0025	Rubber Slug	(6)
51	45-88-0535	Washer	(3)
52	45-88-1575	Washer	(1)

NOTE: The service replacement anvil assembly #40 comes with a friction ring and o-ring on the front for the socket retaining system. Early tool designs (S/N 239B401330001 to 239B403340000) used anvils that had a detent pin and detent spring to secure the sockets. The individual service parts are still available for the early design utilizing the detent pin (No. 44-60-1170) and detent spring (No. 40-50-8320).

FIG.	PART NO.	DESCRIPTION OF PART	NO.REQ.
★ 53	45-88-3250	Washer	(1)
55	43-44-0991	Gasket	(1)
56	22-84-0375	Fan	(1)
	44-86-0282	Ret Ring (Socket Retainer)	(1)
	44-86-0285	Ret Ring (Socket Retainer)	(1)

- FIG. 4** NOTES:
Orient bearing seal (black side) toward the commutator.
- FIG. 10** Torque to 45-50 in./lbs.
- FIG. 11** Torque to 25-30 in./lbs.
- FIG. 16** At the time of brush replacement, the tool should be relubricated with Type "J" Grease, No.49-08-4220.
- FIG. 23,34,42, 43,49** **LUBRICATION (Type "J" Grease, No.49-08-4220):** Lightly coat with grease the Ring Gear (34) and the bearing races of the Camshaft Planet Carrier (43), the back bearing surface of the Ram (49) and the I.D. the Front Housing Bushing (42).
- FIG. 7,40** Place a dab of grease in the Needle Bearing (7) inside the Anvil (40).
- FIG. 31,32,33,43** Fill with grease the center of the five Planet Gears (33) on the Camshaft Assembly (43). Fill the center of the three Planet Gears (32) on the Sun Gear (31).
- FIG. 49** Place approximately 1/2 oz. of grease in the front cavity of the Ram.
- FIG. 43** Place approximately 1/2 oz. grease on the Camshaft (43) inside the Spring (39).