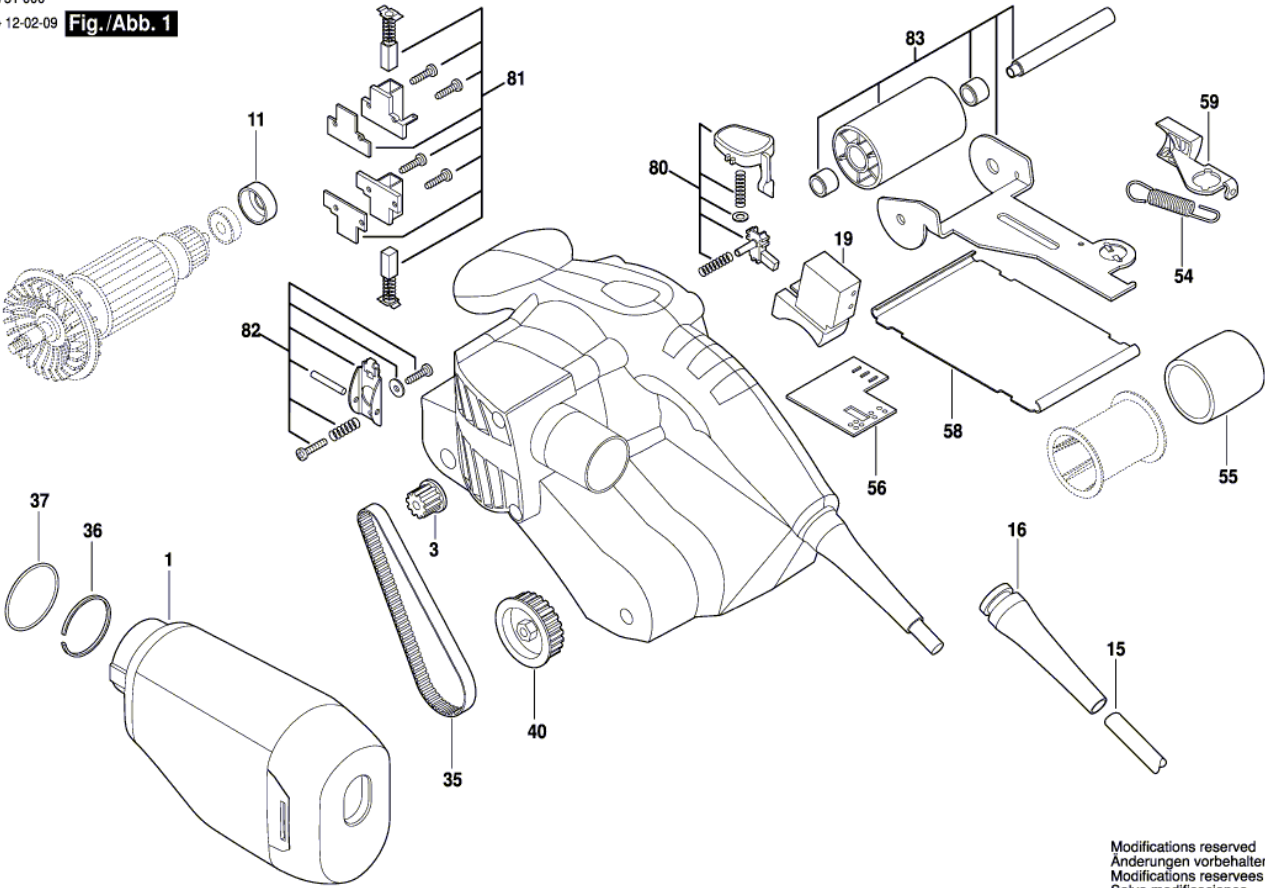


F 012 751 000
Issue 12-02-09
Stand | **Fig./Abb. 1**



Modifications reserved
Änderungen vorbehalten
Modifications reserves
Salvo modificaciones

Pos.	Part Number	Description	Pos.	Part Number	Description
1	1 619 PA3 124				
3	2 610 930 939	Pulley			
11	2 610 930 950	Bushing			
15	2 610 930 930	Cord			
16	1 619 PA3 125				
19	2 610 930 929	On-Off Switch			
35	2 610 930 942	Belt			
36	1 619 PA3 130				
37	1 619 PA3 131				
40	2 610 930 945	Pulley			
54	2 610 930 944	Coil Spring			
55	2 610 930 946	Drive Wheel			
56	1 619 PA3 128				
58	2 610 930 943	Base Plate			
59	2 610 930 947	Spring Lever			
80	1 619 PA3 126				
81	2 610 930 935	Carbon-Brush Set			
82	2 610 930 941	Track-Supporting Roller			
83	1 619 PA3 127				