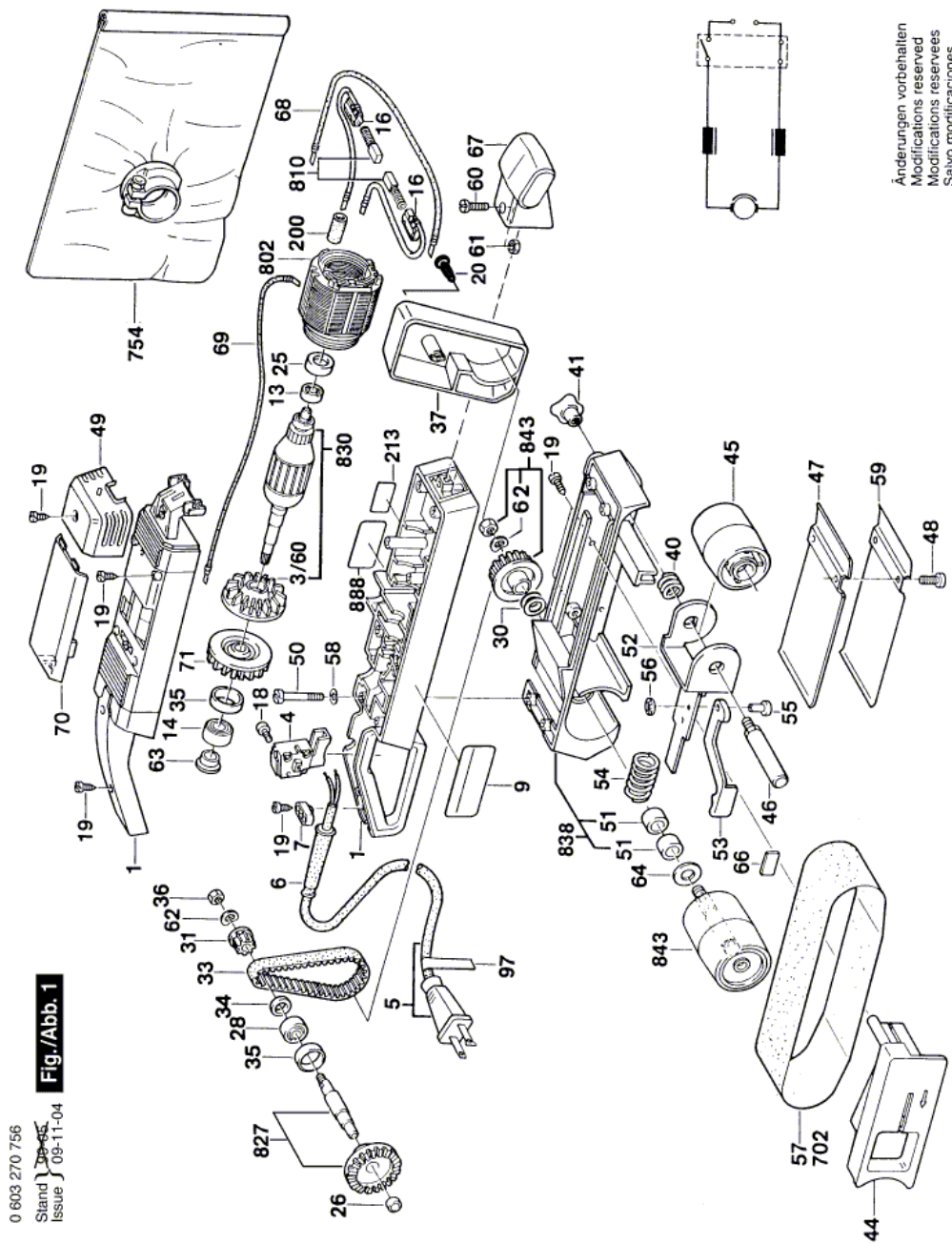


## Belt Sander - 0 603 270 756 - HD7625 TYPE 1

Item	Part Number	Description	Illustration	Price	Quantity	Price Group
1	2 605 104 551	Motor Housing GRAY	1	-,-	1	-
3/60	2 606 610 049	Fan	1	-,-	1	12
4	2 607 200 331	On-Off Switch	1	-,-	1	39
5	2 604 460 189	Power supply cord USA/CDN 2,68m 2 x 082mm SJ 18/2	1	-,-	1	26
6	2 600 703 018	Grommet Ø7,3-Ø8,6x76 MM	1	-,-	1	13
7	2 601 035 001	Cable Clip	1	-,-	1	11
9	2 601 118 503	Manufacturer's nameplate SUNNY SIDE	1	-,-	1	15
13	2 605 805 008	Flanged Bearing	1	-,-	1	17
14	1 610 905 011	Deep-Groove Ball Bearing 9x24x7	1	-,-	1	26
16	2 604 449 026	Brush Holder	1	-,-	2	11
18	2 603 410 001	Socket head cap screw M3x6,5-4.8	1	-,-	2	11
19	2 603 490 022	Torx Oval-Head Screw 4x16	1	-,-	11	10
20	2 603 490 023	Torx Oval-Head Screw 4x20	1	-,-	1	10
25	1 600 502 011	Intermediate Ring	1	-,-	1	11
26	2 600 910 001	Needle bearing Ø14 MM	1	-,-	1	16
28	1 900 905 041	Deep-Groove Ball Bearing 8x22x7	1	-,-	1	25
30	2 600 100 099	Shim	1	-,-	1	11
31	1 606 625 026	Toothed Belt Wheel Z=19	1	-,-	1	13
33	1 604 736 005	Toothed Belt Z=75	1	-,-	1	22
34	2 916 021 013	Plain Washer 8-ST	1	-,-	1	11
35	1 600 206 024	Intermediate Ring	1	-,-	1	11
36	2 915 011 007	Hex Nut DIN 934-M6-8-A	1	-,-	1	10
37	1 605 510 150	Covering hood BLACK	1	-,-	1	16
40	2 604 630 002	Compression Spring	1	-,-	1	11
41	2 603 339 005	Wing Nut	1	-,-	1	13
44	2 608 005 047	Base GRAY	1	-,-	1	21
45	2 606 625 900	Roller	1	-,-	1	27
46	1 603 521 027	Axle	1	-,-	1	22
47	1 601 098 005	Base Plate	1	-,-	1	17
48	2 603 410 045	Socket head cap screw DIN 84-M5x10-4.8	1	-,-	2	11
49	1 605 500 122	Brush-Cover BLACK	1	-,-	1	18
50	2 910 011 170	Socket head cap screw DIN 84-BM5x40-5.8	1	-,-	4	11
51	1 900 301 018	Sintered-Metal Bushing DIN 1850-J12x18x12	1	-,-	2	23

Item	Part Number	Description	Illustration	Price	Quantity	Price Group
52	1 605 807 013	Bearing Bracket	1	-,-	1	21
53	1 602 098 006	Tensioning Lever BLACK	1	-,-	1	13
54	1 604 619 017	Compression Spring	1	-,-	1	12
55	2 917 030 110	Button-Head Rivet	1	-,-	1	13
56	1 600 146 001	Locking Washer	1	-,-	2	11
57	1 609 200 555	Abrasive Belt	1	-,-	1	-
58	2 916 060 006	Spring Washer DIN 137-A5-FST	1	-,-	4	10
59	1 601 098 006	Slide Plate	1	-,-	1	14
60	2 910 021 126	Socket head cap screw DIN 84-AM4x16-8.8	1	-,-	1	10
61	2 915 011 005	Hex Nut DIN 934 -M4-m-8	1	-,-	1	10
62	2 916 061 007	Spring Washer DIN 137-A6-FST	1	-,-	2	10
63	1 600 322 034	Seal ring	1	-,-	1	14
64	1 600 101 618	Shim 0,3 MM THICK	1	-,-	2	11
66	1 601 010 007	Ceramic Plate	1	-,-	1	13
67	1 605 133 036	Handle BLACK	1	-,-	1	20
68	1 604 438 018	Connecting Cable L=410 MM WHITE	1	-,-	1	11
69	1 604 448 000	Connecting Cable L=373 MM WHITE	1	-,-	1	12
70	1 605 500 120	Housing Cover BLACK	1	-,-	1	13
71	1 606 610 120	Fan	1	-,-	1	13
97	2 610 904 501	Reference Plate CAUTION	1	-,-	1	13
200	1 610 712 034	Shrinkable Tube	1	-,-	4	11
213	2 601 118 558	Reference Plate	1	-,-	1	13
702	1 609 201 386	Sanding Belt Set KORN 80	1	-,-	1	-
754	1 605 411 025	Dust Bag	1	-,-	1	-
802	1 604 220 240	Field 120V	1	-,-	1	32
810	2 604 321 905	Carbon-Brush Set	1	-,-	1	23
827	2 606 333 900	Crown Gear Z=45	1	-,-	1	29
830	1 604 010 253	Armature 120V	1	-,-	1	43
838	2 605 190 900	Housing	1	-,-	1	38
843	2 606 625 906	Roller	1	-,-	1	33
888	1 601 106 032	Nameplate 26x52 MM	1	-,-	1	13

Illustration - Type E



Information subject to change without further notice.